

AD 2 AERODROMES**VRMO AD 2.1 AERODROME LOCATION INDICATOR AND NAME****VRMO – KOODDOO ISLAND / KOODDOO AIRPORT****VRMO AD 2.2 AERODROME GEOGRAPHICAL AND ADMINISTRATIVE DATA**

| | | |
|---|---|---|
| 1 | <i>ARP coordinates and site at AD</i> | 00 44 00N 073 26 03E, RWY mid-point |
| 2 | <i>Direction and distance from City</i> | 031deg 0.512km |
| 3 | <i>Elevation / Reference temperature</i> | 1.21M (4FT) / 30.2°C |
| 4 | <i>MAG VAR/Annual change</i> | 4 deg W (2020) / 2°E |
| 5 | <i>AD Operator</i> <i>Address</i> <i>Telephone</i> <i>Fax</i> <i>E-mail Address</i> <i>AFS</i> | Pristine Islands Investments Maldives (PIIMPL) G.Alhifashuviaage 3 rd Floor, Dharumavantha Magu, Male' Republic of Maldives +960 333 3887 - manager@kooddoairport.com - |
| 6 | <i>Types of traffic permitted (IFR/VFR)</i> | IFR/VFR |
| 7 | <i>Remarks</i> | Nil |

VRMO AD 2.3 OPERATIONAL HOURS

| | | |
|----|-----------------------------------|----------------|
| 1 | <i>AD Administration</i> | HO |
| 2 | <i>Customs and Immigration</i> | Nil |
| 3 | <i>Health and sanitation</i> | Nil |
| 4 | <i>AIS Briefing office</i> | Nil |
| 5 | <i>ATS Reporting Office (ARO)</i> | NIL |
| 6 | <i>Met Briefing Office</i> | Nil |
| 7 | <i>ATS</i> | HO |
| 8 | <i>Fuelling</i> | Nil |
| 9 | <i>Handling</i> | Nil |
| 10 | <i>Security</i> | H24 |
| 11 | <i>De-icing</i> | Not Applicable |
| 12 | <i>Remarks</i> | Nil |

VRMO AD 2.4 HANDLING SERVICES AND FACILITIES

| | | |
|---|---|----------------|
| 1 | <i>Cargo handling facilities</i> | Nil |
| 2 | <i>Fuel/oil types</i> | Nil |
| 3 | <i>Fuelling facilities/capacity</i> | Nil |
| 4 | <i>De-icing facilities</i> | Not Applicable |
| 5 | <i>Hangar space available for visiting aircraft</i> | Nil |
| 6 | <i>Repair facilities for visiting aircraft</i> | Nil |
| 7 | <i>Remarks</i> | Nil |

VRMO AD 2.5 PASSENGER FACILITIES

| | | |
|---|---------------------------|-----|
| 1 | <i>Hotels</i> | Nil |
| 2 | <i>Restaurants</i> | 01 |
| 3 | <i>Transportation</i> | Nil |
| 4 | <i>Medical facilities</i> | Nil |
| 5 | <i>Bank/post</i> | Nil |
| 6 | <i>Tourist Office</i> | Nil |
| 7 | <i>Remarks</i> | Nil |

VRMO AD 2.6 RESCUE AND FIRE FIGHTING SERVICES

| | | |
|---|--|--|
| 1 | <i>AD category for fire fighting</i> | CAT 5 |
| 2 | <i>Rescue equipment</i> | Adequately provided as recommended by MCAR 139 |
| 3 | <i>Capabilities for removal of disabled aircraft</i> | Nil |
| 4 | <i>Remarks</i> | Nil |

VRMO AD 2.7 SEASONAL AVAILABILITY – CLEARING

| | | |
|---|------------------------------------|---|
| 1 | <i>Types of clearing equipment</i> | Nil |
| 2 | <i>Clearance priorities</i> | Nil |
| 3 | <i>Remarks</i> | Aerodrome available throughout the year |

VRMO AD 2.8 APRONS, TAXIWAYS AND CHECK LOCATIONS DATA

| | | |
|---|--|--|
| 1 | <i>Apron surface and strength</i> | Surface: Asphalt Strength: PCN15/F/B/X/T |
| 2 | <i>Taxiway width, surface and strength</i> | Width: 15 M Surface: Asphalt Strength: PCN15/F/B/X/T |
| 3 | <i>Altimeter Checkpoint Location and Elevation</i> | Location: Runway mid-point Elevation: 1.21m /4 ft. |
| 4 | <i>VOR/INS checkpoint</i> | VOR: Nil INS: Nil |
| 5 | <i>Remarks</i> | Nil |

VRMO AD 2.9 SURFACE MOVEMENT GUIDANCE AND CONTROL SYSTEM AND MARKINGS

| | | |
|---|--|---|
| 1 | <i>Use of aircraft stand ID signs, TWY guide lines and visual docking/parking guidance system of aircraft stands</i> | Nil |
| 2 | <i>RWY/TWY markings and LGT</i> | RWY: Designation and center line markings. TWY: center line and holding position markings. |
| 3 | <i>Stop bars</i> | Nil |
| 4 | <i>Remarks</i> | Nil |

VRMO AD 2.10 AERODROME OBSTACLES

| <i>In approach/TKOF areas</i> | | | <i>In circling area and at AD</i> | | <i>Remarks</i> |
|-------------------------------|---|--------------------|---|---------------------|----------------|
| 1 | | | 2 | | 3 |
| <i>RWY/Area affected</i> | <i>Obstacle type elevation markings/LGT</i> | <i>Coordinates</i> | <i>Obstacle type elevation markings/LGT</i> | <i>coordinates</i> | |
| <i>a</i> | <i>b</i> | <i>c</i> | <i>a</i> | <i>b</i> | <i>c</i> |
| | | | Windsock 8.2m | 004404N 0732600E | |
| | | | Apron Flood Light Mast Nr 1 12.5m | 004401N 0732600E | |
| | | | Apron Flood Light Mast Nr 2 12.5m | 004359N 0732600E | |
| | | | Control Tower | 004405N 0732559E | |

VRMO AD 2.11 METEOROLOGICAL INFORMATION PROVIDED

| | | |
|----|---|--------------------------|
| 1 | Associated MET Office | Nil |
| 2 | Hours of Service MET Office outside hours | Nil Nil |
| 3 | Office responsible for TAF preparation Periods of validity | Nil Nil |
| 4 | Type of landing forecast Interval of issuance | Nil Nil |
| 5 | Briefing / consultation provided | Nil |
| 6 | Flight documentation Language(s) used | Charts, Plain Language |
| 7 | Charts and other INFO AVBL | Nil |
| 8 | Supplementary EQPT AVBL for INFO for briefing or consultation | Nil |
| 9 | ATS Units Provided with information | Kooddoo TWR Male' TWR |
| 10 | Additional Information | Nil |

VRMO AD 2.12 RUNWAY PHYSICAL CHARACTERISTICS

| Designation RWY NR | True & MAG BRG | Dimensions of RWY (M) | Strength (PCN) And surface of RWY and SWY | THR coordinates | THR elevation and highest elevation of TDZ of precision APP RWY |
|--------------------------|----------------------|-----------------------------|---|---------------------------|---|
| 1 | 2 | 3 | 4 | 5 | 6 |
| 18 | 178° GEO 182° MAG | 1800 x 30 | PCN 37/F/B/X/T Asphalt | 004428.87N 0732601.96E | THR 1.21M / 4 FT |
| 36 | 358° GEO 002° MAG | 1800 x 30 | | 004333.80N 0732604.10E | THR 1.21M / 4FT |

| Slope of RWY - SWY | SWY dimensions(M) | CWY dimensions(M) | Strip dimensions(M) | OFZ | Remarks |
|-----------------------|----------------------|----------------------|---------------------|-----|---------|
| 7 | 8 | 9 | 10 | 11 | 12 |
| 0% | - | 600 x 150 | 1832 x 150 | Nil | Nil |
| | - | 600 x 150 | 1832 X 150 | Nil | Nil |

VRMO AD 2.13 DECLARED DISTANCES

| RWY | TORA(M) | TODA(M) | ASDA(M) | LDA(M) | Remarks |
|-----|---------|---------|---------|--------|---------|
| 1 | 2 | 3 | 4 | 5 | 6 |
| 18 | 1755 | 1963 | 1799 | 1711 | Nil |
| 36 | 1755 | 1962 | 1799 | 1711 | Nil |

VRMO AD 2.14 APPROACH AND RUNWAY LIGHTING

| <i>RWY Designator</i> | <i>APP LGT type LEN INTST</i> | <i>THR LGT color WBAR</i> | <i>VASIS (MEHT) PAPI</i> | <i>TDZ LGT LEN</i> | <i>RWY center line LGT Length spacing color INTST</i> | <i>RWY edge LGT LEN spacing color INTST</i> | <i>RWY End LGT Color WBAR</i> | <i>SWY LGT LEN (M) color</i> | <i>Remark</i> |
|-----------------------|-------------------------------|---------------------------|--------------------------|--------------------|---|---|-------------------------------|------------------------------|---------------|
| 1 | 2 | 3 | 4 | 5 | 6 | 7 | 8 | 9 | 10 |
| 18 | Nil | Green | APAPI Left /3deg 50ft | Nil | Nil | 1200 58M White L/H | red - | Nil | Nil |
| 36 | Nil | Green | APAPI Left /3deg 50ft | Nil | Nil | 1200 58M White L/H | Red - | Nil | Nil |

VRMO AD 2.15 OTHER LIGHTING, SECONDARY POWER SUPPLY

| | | |
|---|--|--|
| 1 | <i>ABN/IBN location characteristics and hours of operation</i> | ABN – On top of the tower Alternate W/G EV 5 sec/..... |
| 2 | <i>LDI location and LGT Anemometer location and LGT</i> | Nil |
| 3 | <i>TWY edge and centre line lighting</i> | Reflectors |
| 4 | <i>Secondary power supply /switch-overtime</i> | Secondary power supply to all lighting on RWY/ Switch-overtime: 15 seconds |
| 5 | <i>Remarks</i> | Nil |

VRMO AD 2.16 HELICOPTER LANDING AREAS

Nil

VRMO AD 2.17 ATS AIRSPACE

| | | |
|---|---------------------------------------|---|
| 1 | <i>Designation and lateral limits</i> | KOODOO CTR A circle radius 10 NM centred at 004400N 0732603E |
| 2 | <i>Vertical limits</i> | 3500 FT |
| 3 | <i>Airspace classification</i> | D |
| 4 | <i>ATS Unit Language(s)</i> | Kooddoo TOWER English |
| 5 | <i>Transition Altitude</i> | 11,000FT AMSL |
| 6 | <i>Remarks</i> | Nil |

VRMO AD 2.18 ATS COMMUNICATION FACILITIES

| <i>Services Designation</i> | <i>Call sign</i> | <i>Frequency</i> | <i>Hours of operation</i> | <i>Remarks</i> |
|-----------------------------|------------------|------------------|---------------------------|----------------|
| 1 | 2 | 3 | 4 | 5 |
| TWR | Kooddoo Tower | 118.30 MHZ | H24 | Nil |

VRMO AD 2.19 RADIO NAVIGATION AND LANDING AIDS

Nil

VRMO AD 2.20 LOCAL TRAFFIC REGULATIONS

Nil

VRMO AD 2.21 NOISE ABATEMENT PROCEDURES

Nil

VRMO AD 2.22 FLIGHT PROCEDURES

Nil

VRMO AD 2.23 ADDITIONAL INFORMATION

Nil

VRMO AD 2.24 CHARTS RELATED TO KOODDOO AIRPORT

| | |
|---|---------------|
| Aerodrome Chart RWY 18/36 | VRMO AD 2-7 |
| Aerodrome Chart RWY 18/36 | VRMO AD 2-7.2 |
| Aerodrome Chart RWY 18/36 | VRMO AD 2-7.4 |
| Aerodrome Obstacle Chart – ICAO Type B | VRMO AD 2-9 |
| Instrument Approach Chart – ICAO RNP RWY 18 | VRMO AD 2-11 |
| Instrument Approach Chart – ICAO RNP RWY 36 | VRMO AD 2-13 |

INTENTIONALLY LEFT BLANK

AERODROME CHART

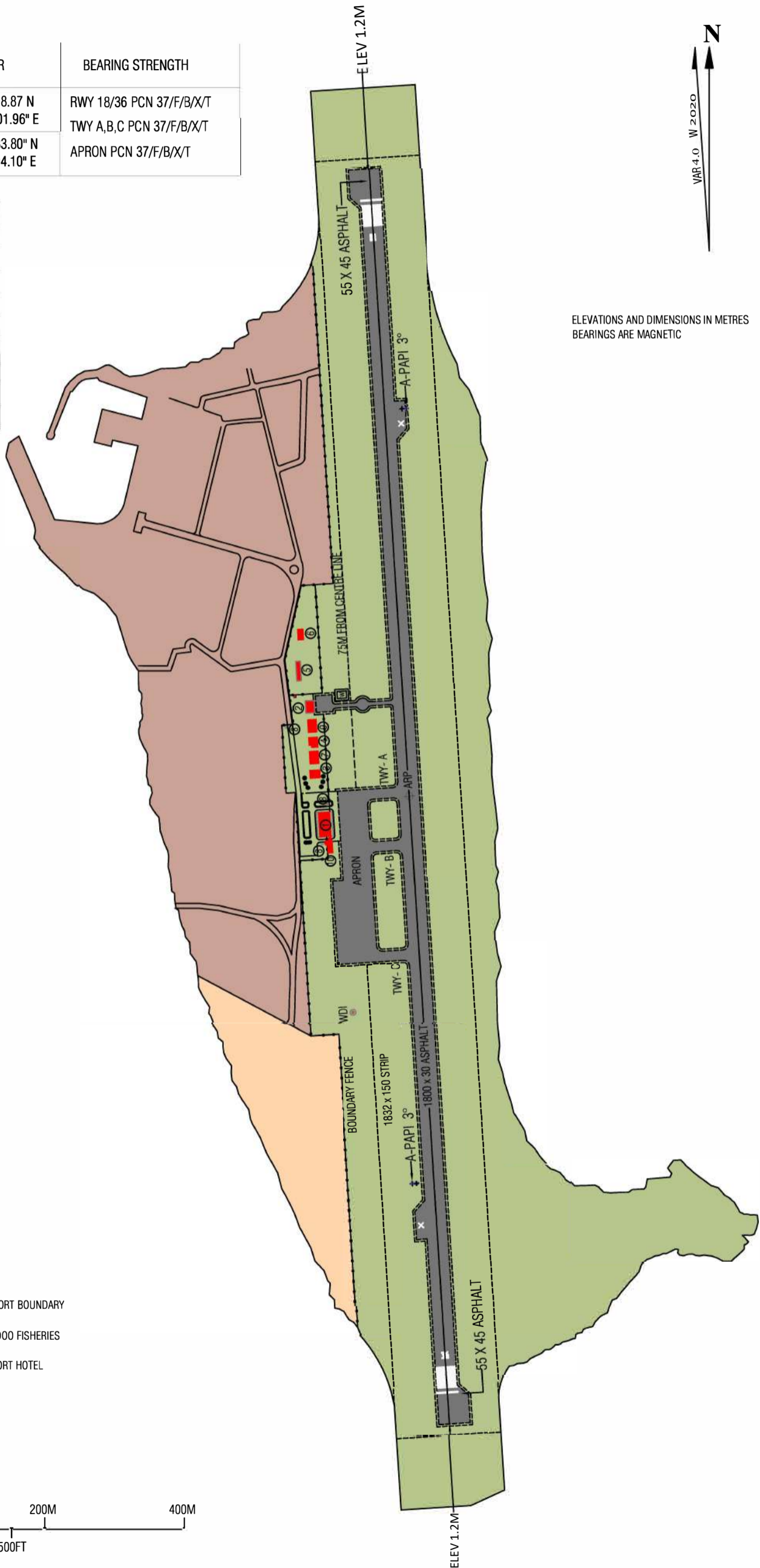
00° 44' 00 N
073° 26' 03 E

TWR 118.30

G.A. KOODDOO /
KOODDOO AIRPORT

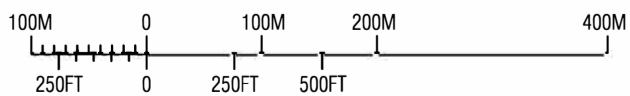
| RWY | DIRECTION (MAG) | THR | BEARING STRENGTH |
|-----|-----------------|--------------------------------------|--|
| 18 | 182° | 00° 44' 28.87 N 73° 26' 01.96" E | RWY 18/36 PCN 37/F/B/X/T TWY A,B,C PCN 37/F/B/X/T |
| 36 | 002° | 00° 43' 33.80" N 73° 26' 04.10" E | APRON PCN 37/F/B/X/T |

| | |
|----|-------------------------------------|
| 1 | TERMINAL BUILDING |
| 2 | FIRE & ATC BUILDING |
| 3 | CANTEEN / RESTAURANT |
| 4 | ADMIN BUILDING |
| 5 | SERVICES BUILDINGS (STAFF & LABOUR) |
| 6 | POWER HOUSE / DESALINATION PLANT |
| 7 | AIRPORT ACCOMMODATION BLOCK-2 |
| 8 | SECURITY POST |
| 9 | AIRPORT ACCOMMODATION BLOCK-1 |
| 10 | VIP LOUNGE |

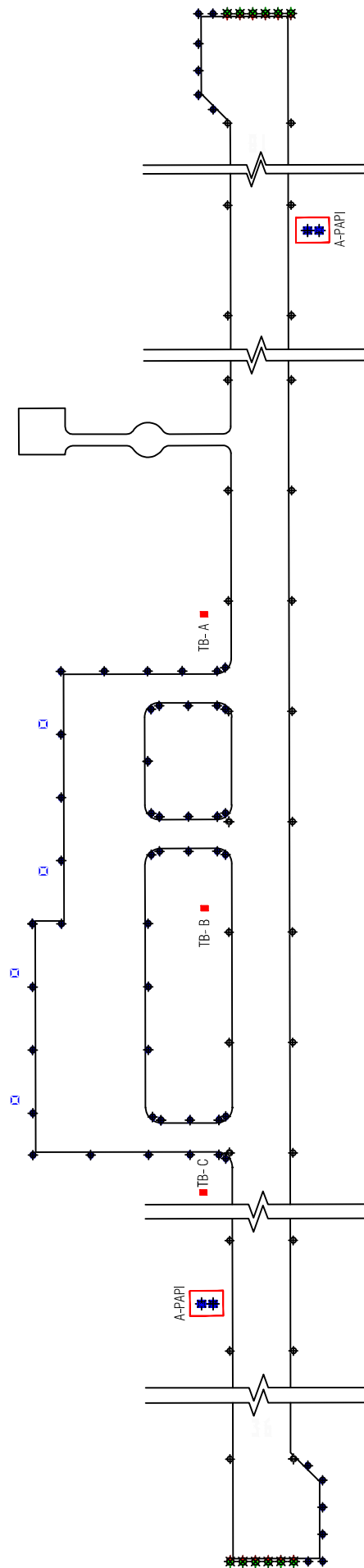


ELEVATIONS AND DIMENSIONS IN METRES
BEARINGS ARE MAGNETIC

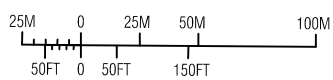
- AIRPORT BOUNDARY
- KOODDOO FISHERIES
- AIRPORT HOTEL



LIGHTING AIDS RWY 18/36 AND EXIT TWY

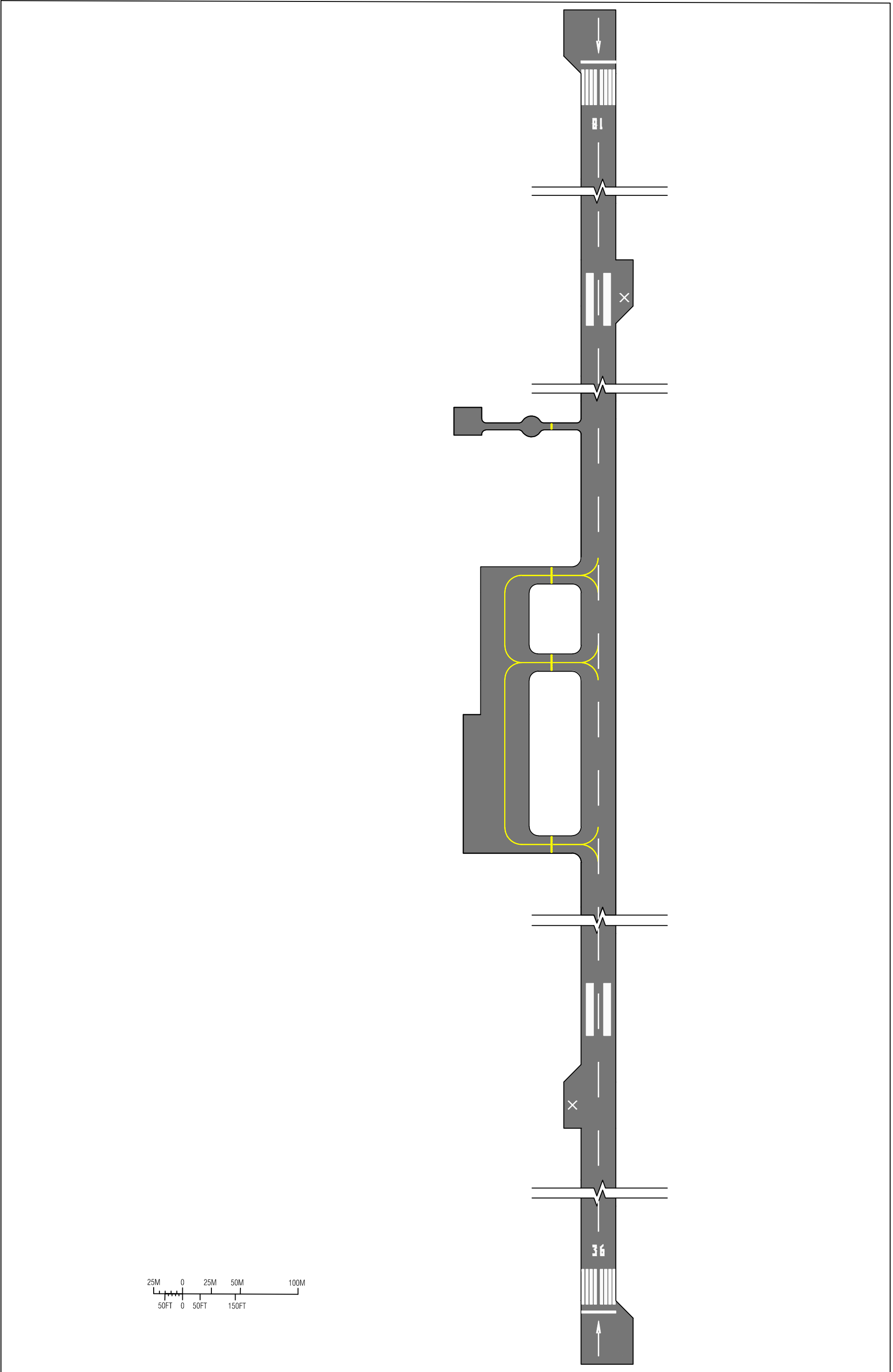


- ◆ RUNWAY EDGE LIGHTS
- ▲ RUNWAY END LIGHTS
- INSET LIGHTS
- ★ REFLECTORS
- APRON FLOOD LIGHTS



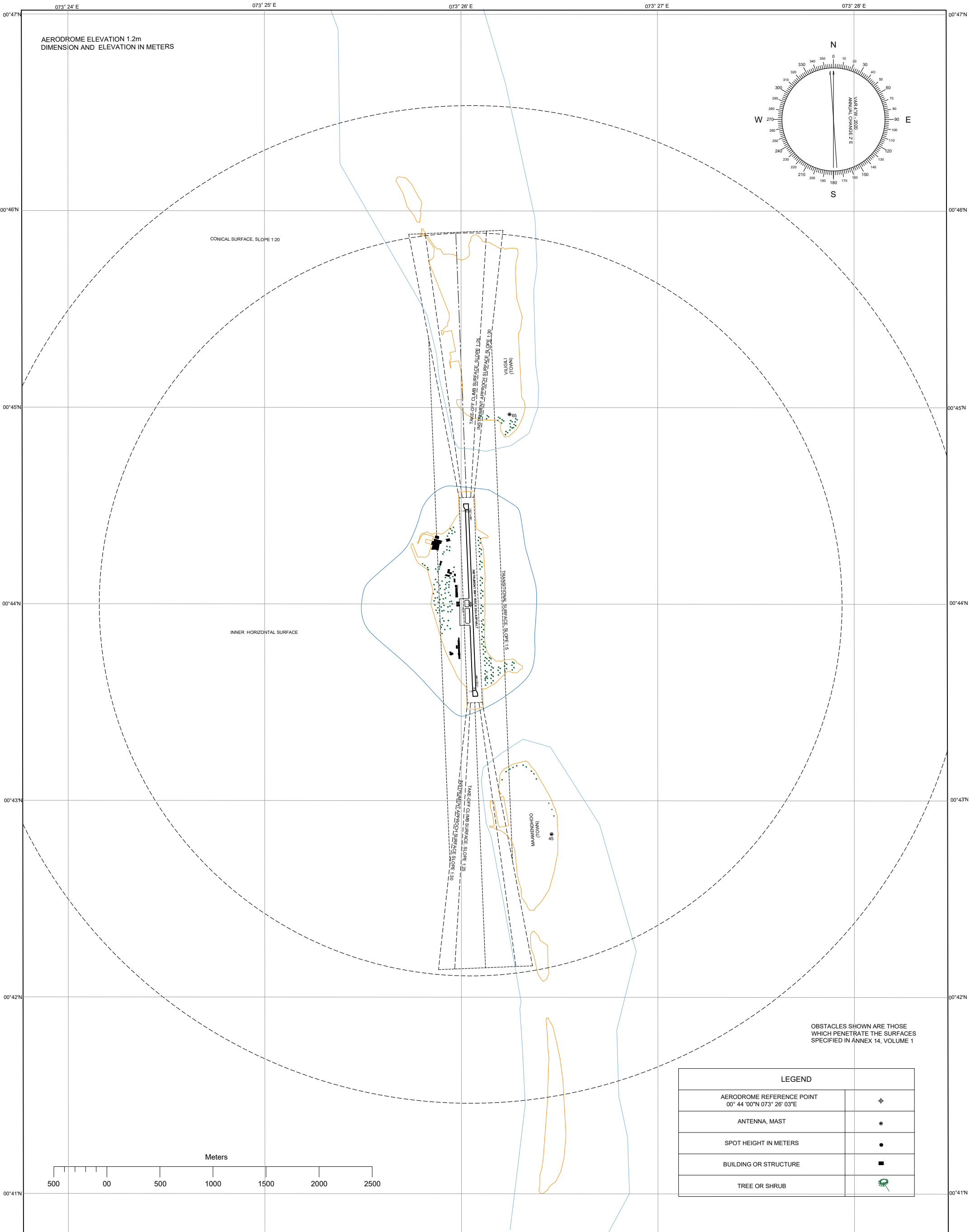
AIRFIELD MARKING

G.A. KOODDOO /
KOODDOO AIRPORT

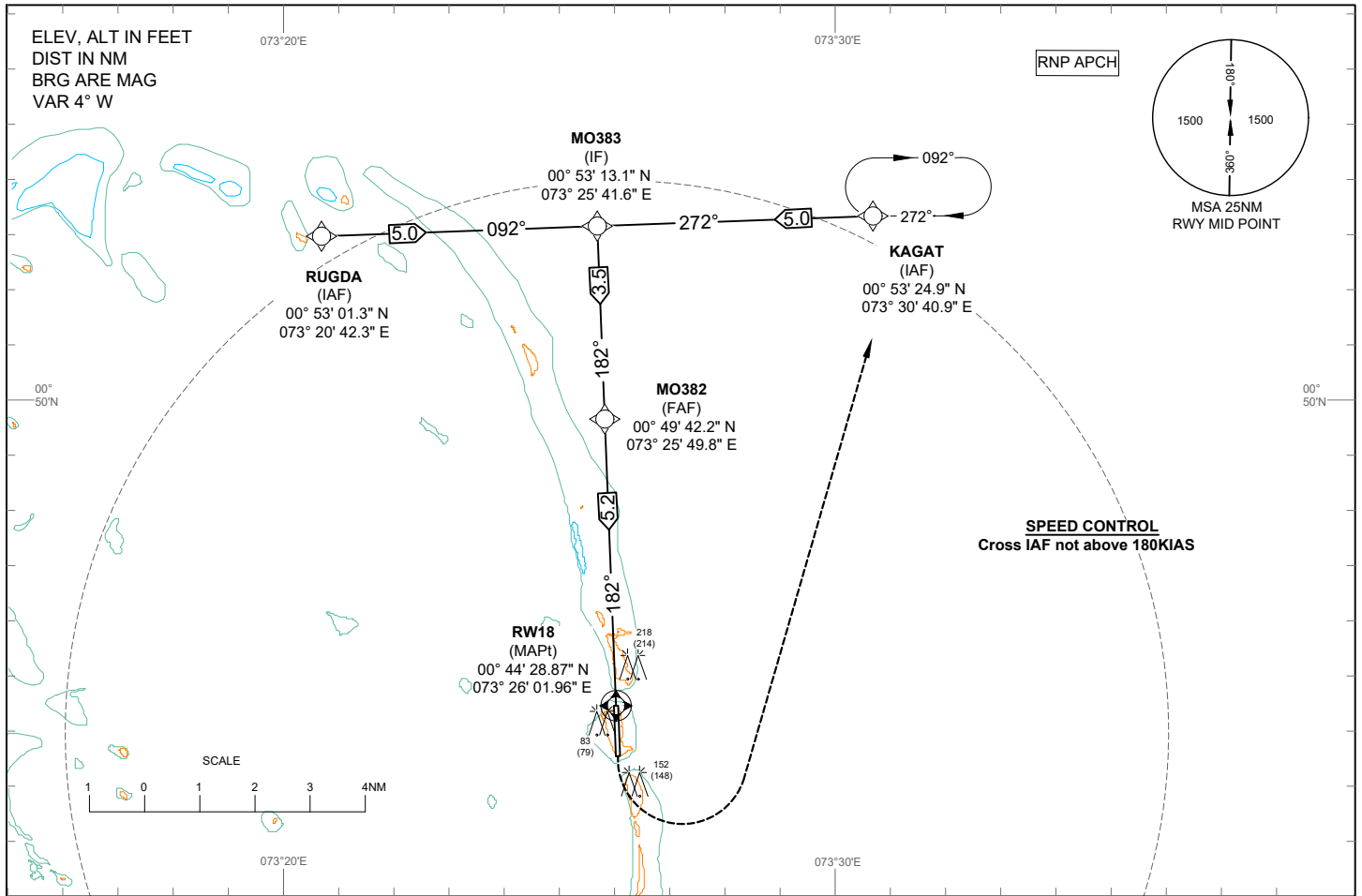


AERODROME OBSTACLE CHART - ICAO
TYPE B

KOODDOO AIRPORT (VRMO)



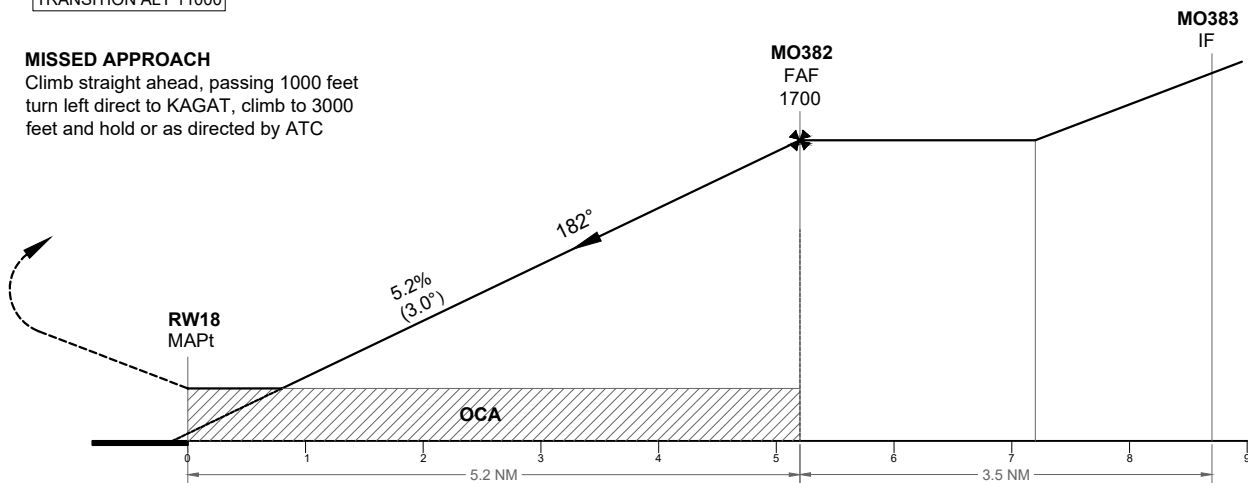
| LEGEND | |
|---|---|
| AERODROME REFERENCE POINT 00° 44' 00"N 073° 26' 03"E | ⊕ |
| ANTENNA, MAST | ● |
| SPOT HEIGHT IN METERS | • |
| BUILDING OR STRUCTURE | ■ |
| TREE OR SHRUB | 🌳 |



TRANSITION ALT 11000

MISSED APPROACH

Climb straight ahead, passing 1000 feet
turn left direct to KAGAT, climb to 3000
feet and hold or as directed by ATC



| AIRCRAFT CATEGORY | A | | B | | C |
|-----------------------|-----------|-----------|------------|-------------|---|
| LNAV / VNAV OCA (OCH) | 380 (376) | | | | |
| LNAV OCA (OCH) | 470 (466) | | | | |
| DISTANCE TO THRESHOLD | 1 | 2 | 3 | 4 | |
| ALTITUDE (HEIGHT) | OCA | 690 (686) | 1000 (996) | 1320 (1316) | |

RNP RWY 18**Tabular Description**

| Serial Number | Path Descriptor | Waypoint Identifier | Flyover | Course (°M) | Distance (NM) | Turn | Altitude | Speed (KT) | Nav Spec |
|---------------|-----------------|---------------------|---------|-------------|---------------|------|----------|------------|----------|
| 01 | IF | KAGAT | - | - | | - | +3000 | -180 | RNP APCH |
| 02 | TF | MO383 | - | 272 | 5 | L | - | - | RNP APCH |
| 03 | TF | MO382 | - | 182 | 3.5 | - | @1700 | - | RNP APCH |
| 04 | TF | RW18 | Y | 182 | 5.2 | - | - | - | RNP APCH |
| 05 | FA | RWY18 | - | 182 | - | L | +1000 | - | RNP APCH |
| 06 | DF | KAGAT | Y | - | - | - | +3000 | - | RNP APCH |
| 07 | HM | KAGAT | Y | 272 | - | - | +3000 | - | RNP APCH |

| Serial Number | Path Descriptor | Waypoint Identifier | Flyover | Course (°M) | Distance (NM) | Turn | Altitude | Speed (KT) | Nav Spec |
|---------------|-----------------|---------------------|---------|-------------|---------------|------|----------|------------|----------|
| 01 | IF | RUGDA | - | - | | - | +3000 | -180 | RNP APCH |
| 02 | TF | MO383 | - | 092 | 5 | R | - | - | RNP APCH |
| 03 | TF | MO382 | - | 182 | 3.5 | - | @1700 | - | RNP APCH |
| 04 | TF | RW18 | Y | 182 | 5.2 | - | - | - | RNP APCH |
| 05 | FA | RWY18 | - | 182 | - | L | +1000 | - | RNP APCH |
| 06 | DF | KAGAT | Y | - | - | - | +3000 | - | RNP APCH |
| 07 | HM | KAGAT | Y | 272 | - | - | +3000 | - | RNP APCH |

Waypoint List

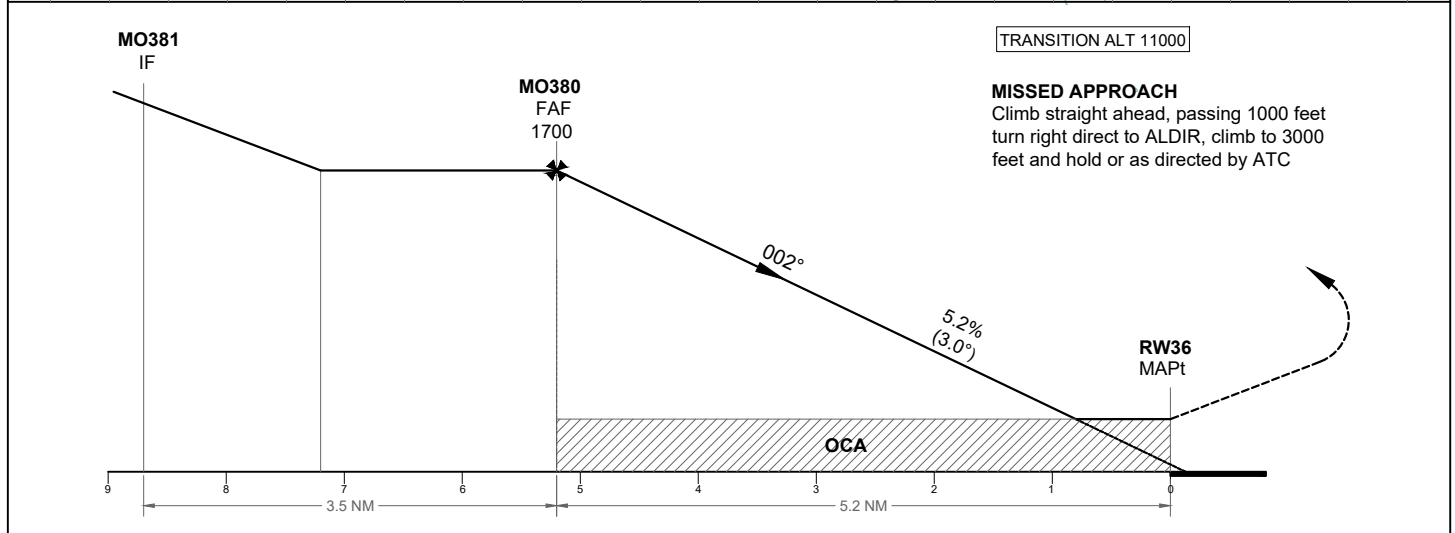
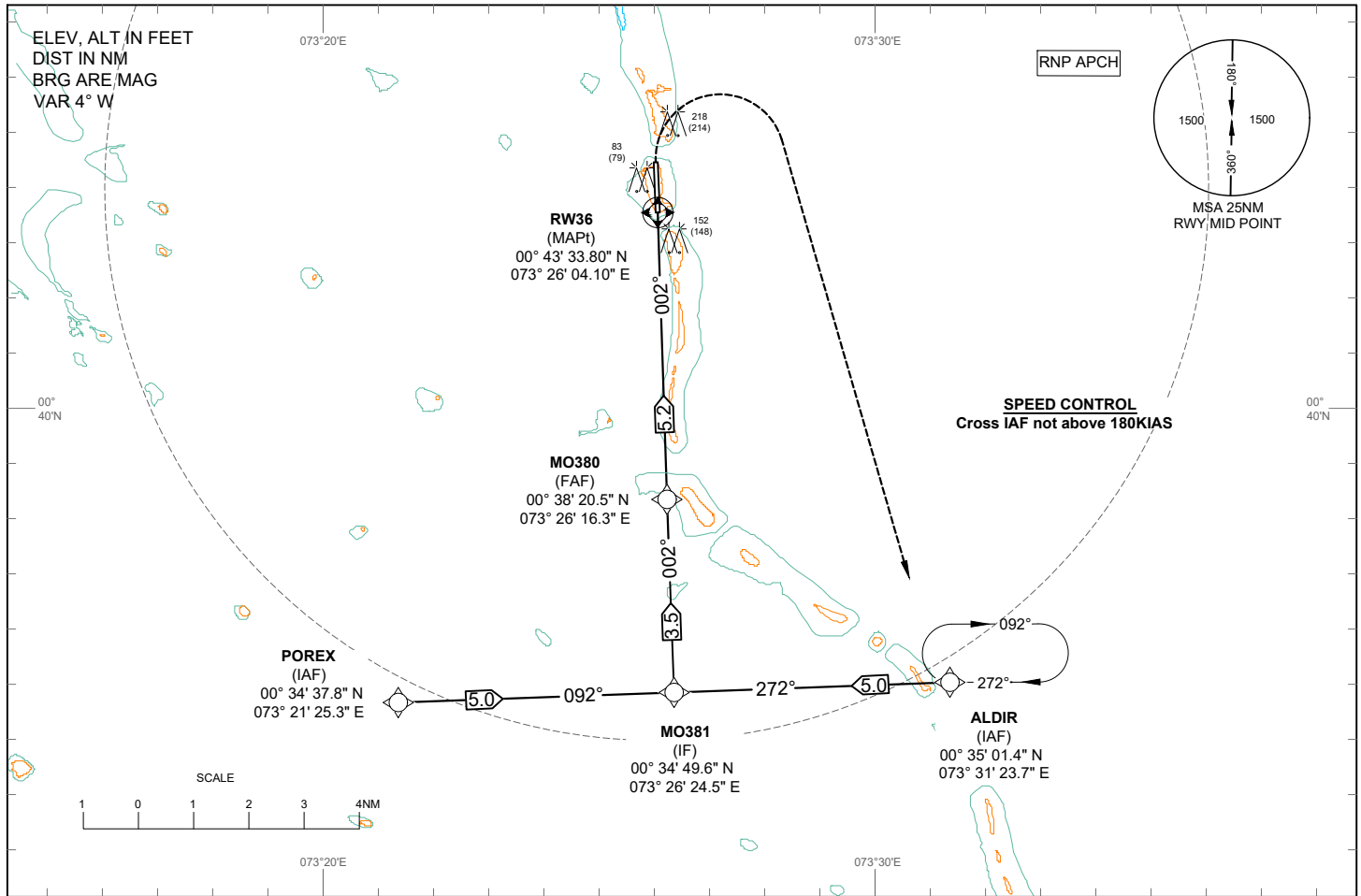
| Waypoint identifier | Coordinates |
|---------------------|------------------------|
| KAGAT | 005324.9N 0733040.9E |
| RUGDA | 005301.3N 0732042.3E |
| MO383 | 005313.1N 0732541.6E |
| MO382 | 004942.2N 0732549.8E |
| RW18 | 004428.87N 0732601.96E |

**INSTRUMENT
APPROACH
CHART - ICAO**

AERODROME ELEV 4 FT
HEIGHT RELATED TO
THR RWY 36 - ELEV 4 FT

TWR 118.30

KOODDOO (VRMO)
RNP RWY 36



| AIRCRAFT CATEGORY | A | | B | | C |
|-----------------------|-------------|------------|-----------|-----|---|
| LNAV / VNAV OCA (OCH) | | | 310 (306) | | |
| LNAV OCA (OCH) | | | 400 (396) | | |
| DISTANCE TO THRESHOLD | 4 | 3 | 2 | 1 | |
| ALTITUDE (HEIGHT) | 1320 (1316) | 1000 (996) | 690 (686) | OCA | |

RNP RWY 36**Tabular Description**

| Serial Number | Path Descriptor | Waypoint Identifier | Flyover | Course (°M) | Distance (NM) | Turn | Altitude | Speed (KT) | Nav Spec |
|---------------|-----------------|---------------------|---------|-------------|---------------|------|----------|------------|----------|
| 01 | IF | ALDIR | - | - | | - | +3000 | -180 | RNP APCH |
| 02 | TF | MO381 | - | 272 | 5 | R | - | - | RNP APCH |
| 03 | TF | MO380 | - | 002 | 3.5 | - | @1700 | - | RNP APCH |
| 04 | TF | RW36 | Y | 002 | 5.2 | - | - | - | RNP APCH |
| 05 | FA | RWY36 | - | 002 | - | R | +1000 | - | RNP APCH |
| 06 | DF | ALDIR | Y | - | - | - | +3000 | - | RNP APCH |
| 07 | HM | ALDIR | Y | 272 | - | - | +3000 | - | RNP APCH |

| Serial Number | Path Descriptor | Waypoint Identifier | Flyover | Course (°M) | Distance (NM) | Turn | Altitude | Speed (KT) | Nav Spec |
|---------------|-----------------|---------------------|---------|-------------|---------------|------|----------|------------|----------|
| 01 | IF | POREX | - | - | | - | +3000 | -180 | RNP APCH |
| 02 | TF | MO381 | - | 092 | 5 | L | - | - | RNP APCH |
| 03 | TF | MO380 | - | 002 | 3.5 | - | @1700 | - | RNP APCH |
| 04 | TF | RW36 | Y | 002 | 5.2 | - | - | - | RNP APCH |
| 05 | FA | RWY36 | - | 002 | - | R | +1000 | - | RNP APCH |
| 06 | DF | ALDIR | Y | - | - | - | +3000 | - | RNP APCH |
| 07 | HM | ALDIR | Y | 272 | - | - | +3000 | - | RNP APCH |

Waypoint List

| Waypoint identifier | Coordinates |
|---------------------|------------------------|
| ALDIR | 003501.4N 0733123.7E |
| POREX | 003437.8N 0732125.3E |
| MO381 | 003449.6N 0732624.5E |
| MO380 | 003820.5N 0732616.3E |
| RW36 | 004333.80N 0732604.10E |