

**AD 2 AERODROMES****VRMV AD 2.1 AERODROME LOCATION INDICATOR AND NAME**

VRMV – MAAMIGILI ISLAND / VILLA INTERNATIONAL AIRPORT MAAMIGILI

**VRMV 2.2 AERODROME GEOGRAPHICAL AND ADMINISTRATIVE DATA**

1	ARP coordinates and site at AD	032814N 0725004E Runway mid-point
2	Direction and distance from City	010° 210M North Maamigili
3	Elevation / Reference temperature	2.11M (7FT) / 31.7°C
4	MAG VAR/Annual change	3° W (2017) / 2° E
5	AD Operator Address  Telephone E- mail Address	Villa Shipping and Trading Company Pvt. Ltd Villa International Airport Maamigili Maamigili Island South Ari Atoll Republic of Maldives Tel: (+960) 668 4236, (+960) 999 2688 safety@villaairport.mv
6	Types of traffic permitted (IFR/VFR)	IFR/VFR
7	Remarks	Nil

**VRMV AD 2.3 OPERATIONAL HOURS**

1	AD Administration	Saturday to Thursday 0800 – 1630 Hours
2	Customs and Immigration	On request basis
3	Health and sanitation	Maamigili Health Centre
4	AIS Briefing office	Nil
5	ATS Reporting Office (ARO)	Nil
6	Met Briefing Office	Nil
7	ATS	HO
8	Fuelling	Nil
9	Handling	Nil
10	Security	H24
11	De-icing	Not Applicable
12	Remarks	Nil

**VRMV AD 2.4 HANDLING SERVICES AND FACILITIES**

1	Cargo handling facilities	Equipped to handle aircraft ranging from light to medium aircraft
2	Fuel/oil types	Nil
3	Fuelling facilities/capacity	Nil
4	De-icing facilities	Not Applicable
5	Hangar space available for visiting aircraft	Nil
6	Repair facilities for visiting aircraft	Fully equipped for ATR42 repair (Villa Air Hangar at VAM) subject to their availability
7	Remarks	Nil

**VRMV AD 2.5 PASSENGER FACILITIES**

1	Hotels	Holiday Island Resort and Spa Sun Island Resort and Spa Hotels are also available at Maamigili Island
2	Restaurants	Q Lounge / Restaurant
3	Transportation	By bus, dhoani and speed boat
4	Medical facilities	Maamigili Health Centre at Maamigili Island
5	Bank/post	State Bank of India Maamigili Branch
6	Tourist Office	Nil
7	Remarks	Nil

**VRMV AD 2.6 RESCUE AND FIRE FIGHTING SERVICES**

1	<i>AD category for fire fighting</i>	CAT 5
2	<i>Rescue equipment</i>	Adequately provided as recommended by ICAO
3	<i>Capabilities for removal of disabled aircraft</i>	Able to remove light aircrafts
4	<i>Remarks</i>	Nil

**VRMV AD 2.7 SEASONAL AVAILABILITY – CLEARING**

1	<i>Types of clearing equipment</i>	Nil
2	<i>Clearance priorities</i>	Nil
3	<i>Remarks</i>	Aerodrome available throughout the year

**VRMV AD 2.8 APRONS, TAXIWAYS AND CHECK LOCATIONS DATA**

1	<i>Apron surface and strength</i>	Surface: Asphalt Strength: PCN 60/F/C/W/T
2	<i>Taxiway width, surface and strength</i>	Width: 15M Surface: Asphalt Strength: PCN 60/F/C/W/T
3	<i>ACL location and elevation</i>	Location: Runway mid-point Elevation: 1.62M / 5FT
4	<i>VOR/INS checkpoint</i>	VOR: Nil INS: Nil
5	<i>remarks</i>	Nil

**VRMV AD 2.9 SURFACE MOVEMENT GUIDANCE AND CONTROL SYSTEM AND MARKINGS**

1	<i>Use of aircraft stand ID signs, TWY guide lines and visual docking/parking guidance system of aircraft stands</i>	Not applicable
2	<i>RWY/TWY markings and LGT</i>	RWY: Designation, THR, TDZ and side stripe markings, Edge lights, THR and End lights TWY: Centre line, holding position markings on both taxiways Edge lights on all taxiways
3	<i>Stop bars</i>	Nil
4	<i>Remarks</i>	Nil

**VRMV AD 2.10 AERODROME OBSTACLES**

<i>In approach/TKOF areas</i>			<i>In circling area and at AD</i>		<i>Remarks</i>
1			2		3
<i>RWY/Area affected</i>	<i>Obstacle type elevation markings/LGT</i>	<i>Coordinates</i>	<i>Obstacle type elevation markings/LGT</i>	<i>coordinates</i>	
<i>a</i>	<i>b</i>	<i>c</i>	<i>a</i>	<i>b</i>	
			Ooredoo Antenna 30M	032839.0N 0725017.2E	
			Dhiraagu Antenna 1 24M	032827.5N 0725020.0E	
			Apron Mast 1 17M	032822.8N 0725020.2E	
			Apron Mast 2 16M	032822.7N 0725018.3E	
			Apron Mast 3 16M	032822.6N 0725016.7E	
			Apron Mast 4 16M	032822.9N 0725015.1E	
			Apron Mast 5 16M	032822.4N 0725013.5E	

			Apron Mast 6 16M	032822.3N 0725011.5E	
			Apron Mast 7 17M	032822.2N 0725010.2E	
			Apron Mast 8 17M	032822.1N 0725008.6E	
			Apron Mast 9 17M	032822.0N 0725007.0E	
			Project Site Mast 1 17M	032824.1N 0725037.7E	
			Project Site Mast 2 17M	032824.2N 0725040.0E	
			Project Site Mast 3 17M	032824.3N 0725041.7E	
			Project Site Mast 4 17M	032822.7N 0725041.5E	
			Project Site Mast 5 17M	032822.4N 0725040.2E	
			Project Site Mast 6 17M	032822.2N 0725037.9E	
			WDI 27 9M	032818.4N 0725026.5E	
			WDI 09 9M	032815.5N 0724941.6E	
			Villa Air Hanger 16.20M	032823.8N 0725025.0E	
			Project Store Building 13M	032824.9N 0725030.2E	
			Workshop 12M	032823.4N 0725034.7E	
			Project Office Block 11M	032823.8N 0725036.5E	
			ATC Tower 24M	032822.7N 0725003.7E	

### VRMV AD 2.11 METEOROLOGICAL INFORMATION PROVIDED

1	Associated MET Office	Nil
2	Hours of Service MET Office outside hours	Nil Nil
3	Office responsible for TAF preparation Periods of validity	Nil Nil
4	Type of landing forecast Interval of issuance	Nil Nil
5	Briefing/consultation provided	Consultation with Maldives Meteorological Services at VIA
6	Flight documentation / Language(s) used	English
7	Charts and other INFO AVBL	Yes
8	Supplementary EQPT AVBL for INFO for briefing or consultation	ATIS
9	ATS Units Provided with information	Maamigili TWR Male' TWR
10	Additional Information	Nil

**VRMV AD 2.12 RUNWAY PHYSICAL CHARACTERISTICS**

Designation RWY NR	True & MAG BRG	Dimensions of RWY (M)	Strength (PCN) And surface of RWY and SWY	THR coordinates	THR elevation and highest elevation of TDZ of precision APP RWY
1	2	3	4	5	6
09	086° GEO	1800 x 30	PCN 60/F/C/W/T Asphalt	032812.40N 0724935.20E	THR 2.11M / 6.9FT
27	266° GEO	1800 x 30		032816.20N 0725033.40E	THR 2.10M / 6.8FT

Slope of RWY - SWY	SWY dimensions	CWY dimensions	Strip dimensions	OFZ	Remarks
7	8	9	10	11	12
0%	Nil	300X150	1920X150	Nil	Nil
0%	Nil	300X150	1920X150	Nil	Nil

**VRMV AD 2.13 DECLARED DISTANCES**

RWY	TORA(M)	TODA(M)	ASDA(M)	LDA(M)	Remarks
1	2	3	4	5	6
09	1800	2100	1800	1800	Nil
27	1800	2100	1800	1800	Nil

**VRMV AD 2.14 APPROACH AND RUNWAY LIGHTING**

RWY Designator	APP LGT type LEN INTST	THR LGT colour WBAR	VASIS (MEHT) PAPI	TDZ LGT LEN	RWY centre line LGT Length spacing colour INTST	RWY edge LGT LEN spacing colour INTST	RWY End LGT Colour WBAR	SWY LGT LEN (M) colour	Remark
1	2	3	4	5	6	7	8	9	10
09	Nil	Green No	PAPI 3°40'	Nil	Nil	1800M 60M White	Red -	15M Blue	Nil
27		Green No	PAPI 3°40'	Nil	Nil	1800M 60M White	Red -	15M Blue	Nil

**VRMV AD 2.15 OTHER LIGHTING, SECONDARY POWER SUPPLY**

1	ABN/IBN LOCATION CHARACTERISTICS AND HOURS OF OPERATION	ON TOP OF CONTROL TOWER, ALTN W/G EV MIN/ IBN: NIL, HN
2	LDI location and LGT Anemometer location and LGT	LDI: Nil Anemometer: On top of control tower
3	TWY edge and centre line lighting	Edge TWY A,B Centre Line: Nil
4	Secondary power supply /switch-overtime	Secondary power supply to all lighting on RWY/ Switch-overtime: 15 seconds
5	Remarks	Nil

**VRMV AD 2.16 HELICOPTER LANDING AREAS**

Nil

**VRMV AD 2.17 ATS AIRSPACE**

1	<i>Designation and lateral limits</i>	MAAMIGILI CTR Airspace bounded by the following: 033507N 0723117E, 032957N 0724522E, thence along a 5NM radius arc centred on 032814N 0725004E (rwy mid point) to 033258N 0725147E, thence to 034707N 0725655E, thence along a 20NM radius arc centred on 032814N 0725004E (rwy mid point) to 031811N 0730723E, thence to 032544N 0725424E, thence along a 5NM radius arc centred on 032814N 0725004E (rwy mid point) to 032544N 0724545E, thence to 031811N 0723245E, thence along a 20NM radius arc centred on 032814N 0725004E (rwy mid point) to 033507N 0723117E.
2	<i>Vertical limits</i>	SFC to 3 500FT AMSL
3	<i>Airspace classification</i>	D
4	<i>ATS Units Language(s)</i>	Maamigili Tower English
5	<i>Transition Altitude</i>	11 000FT AMSL
6	<i>Remarks</i>	Nil

**VRMV AD 2.18 ATS COMMUNICATION FACILITIES**

<i>Services Designation</i>	<i>Call sign</i>	<i>Frequency</i>	<i>Hours of operation</i>	<i>Remarks</i>
1	2	3	4	5
TWR	Maamigili Tower	118.9 MHZ	HO	Primary frequency Emergency Frequency Frequency SMC Frequency
ATIS	Maamigili Information	125.6 MHZ	HO	

**VRMV AD 2.19 RADIO NAVIGATION AND LANDING AIDS**

Nil

**VRMV AD 2.20 LOCAL TRAFFIC REGULATIONS**

Nil

**VRMV AD 2.21 NOISE ABATEMENT PROCEDURES**

Nil

**VRMV AD 2.22 FLIGHT PROCEDURES**

Aerodrome Traffic Circuit :

- RWY 27 - standard traffic circuit and all turns shall be made to left
- RWY 09 – non-standard circuit and all turns shall be made to the right

When Maamigili Tower is operational VFR and IFR within Mamilgili CTR are subject to ATS.

When Maamigili Tower is NOT in operation VFR operating within Maamigili CTR shall maintain continuous listening watch and transmit position information on TIBA frequency 128.9MHz

During seaplane taxiing and landing/take-off pilot in command is responsible to avoid obstacles on water.

**VRMV 2.23 ADDITIONAL INFORMATION**

Nil

**VRMV AD 2.24 CHARTS RELATED TO VILLA INTERNATIONAL AIRPORT MAAMIGILI**

Aerodrome Chart	VRMV AD 2-7
Instrument Approach Chart – ICAO, RNP RWY 09	VRMV AD 2-9
Instrument Approach Chart – ICAO, RNP RWY 27	VRMV AD 2-11

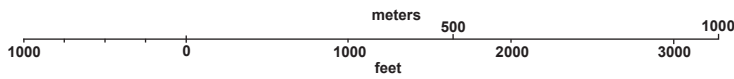
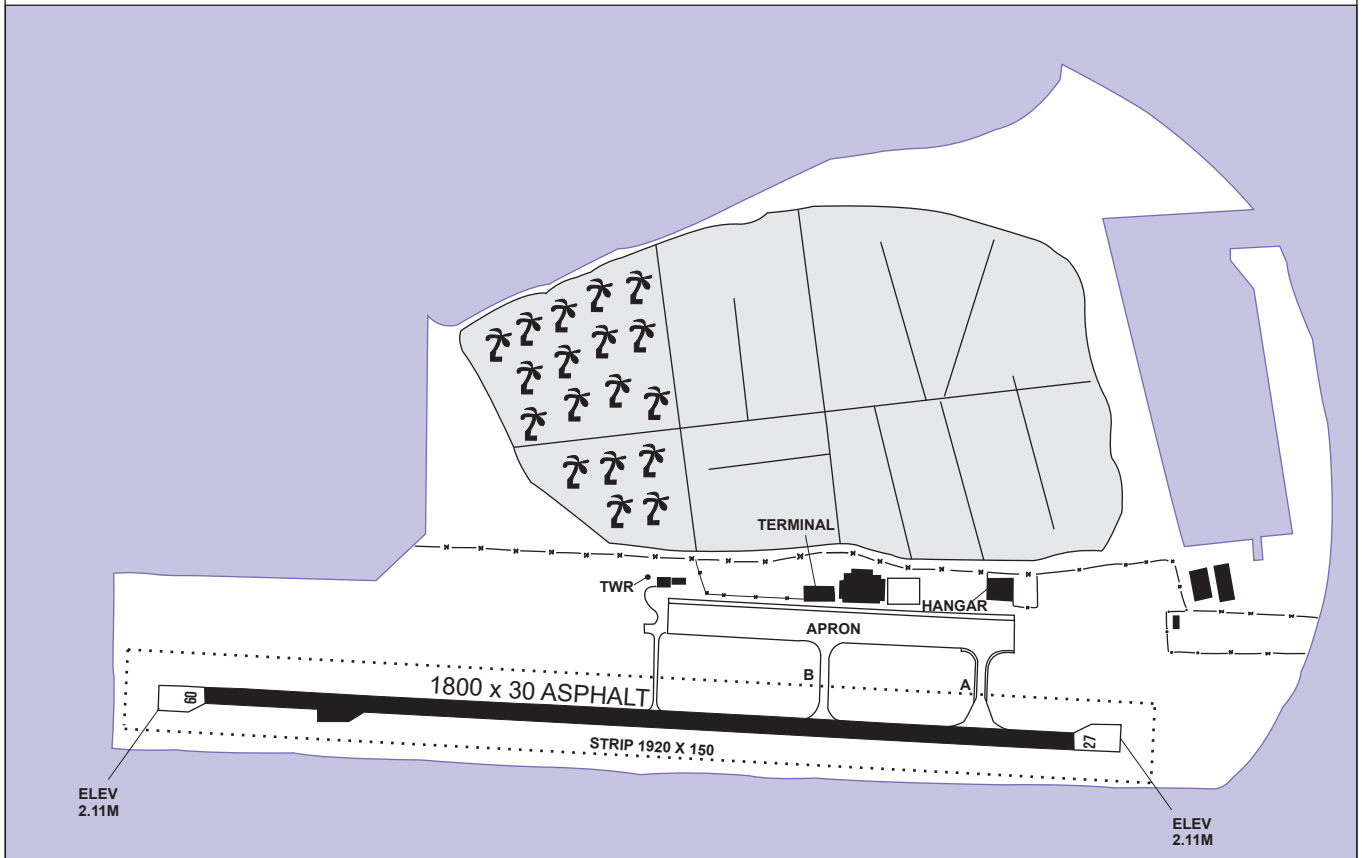
AERODROME CHART 032814N 0725004E ELEV 2.10M TWR 118.9 MAAMIGILI / VILLA INTERNATIONAL AIRPORT

RWY	DIRECTION	THR	BEARING STRENGTH
09	089°	03° 28' 12.40" N 072° 49' 35.20" E	PCN60/F/C/W/T
27	269°	03° 28' 16.20" N 072° 50' 33.40" E	PCN60/F/C/W/T

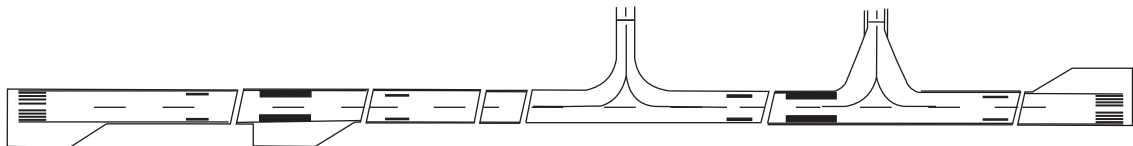
ELEVATIONS AND DIMENSIONS IN METERS  
BEARINGS ARE MAGNETIC



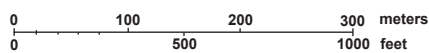
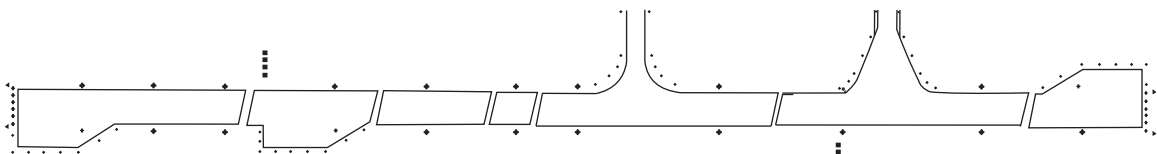
ANNUAL RATE  
OF CHANGE 2' E



MARKING AIDS RWY 09/27 AND EXIT TWY



LIGHTING AIDS RWY 09/27 AND EXIT TWY



**LEGEND**

■	UNI DIRECTIONAL LIGHT
+	BI DIRECTIONAL LIGHT
◆	OMNI DIRECTIONAL LIGHT
▶	CAPACITOR DISCHARGE LIGHT

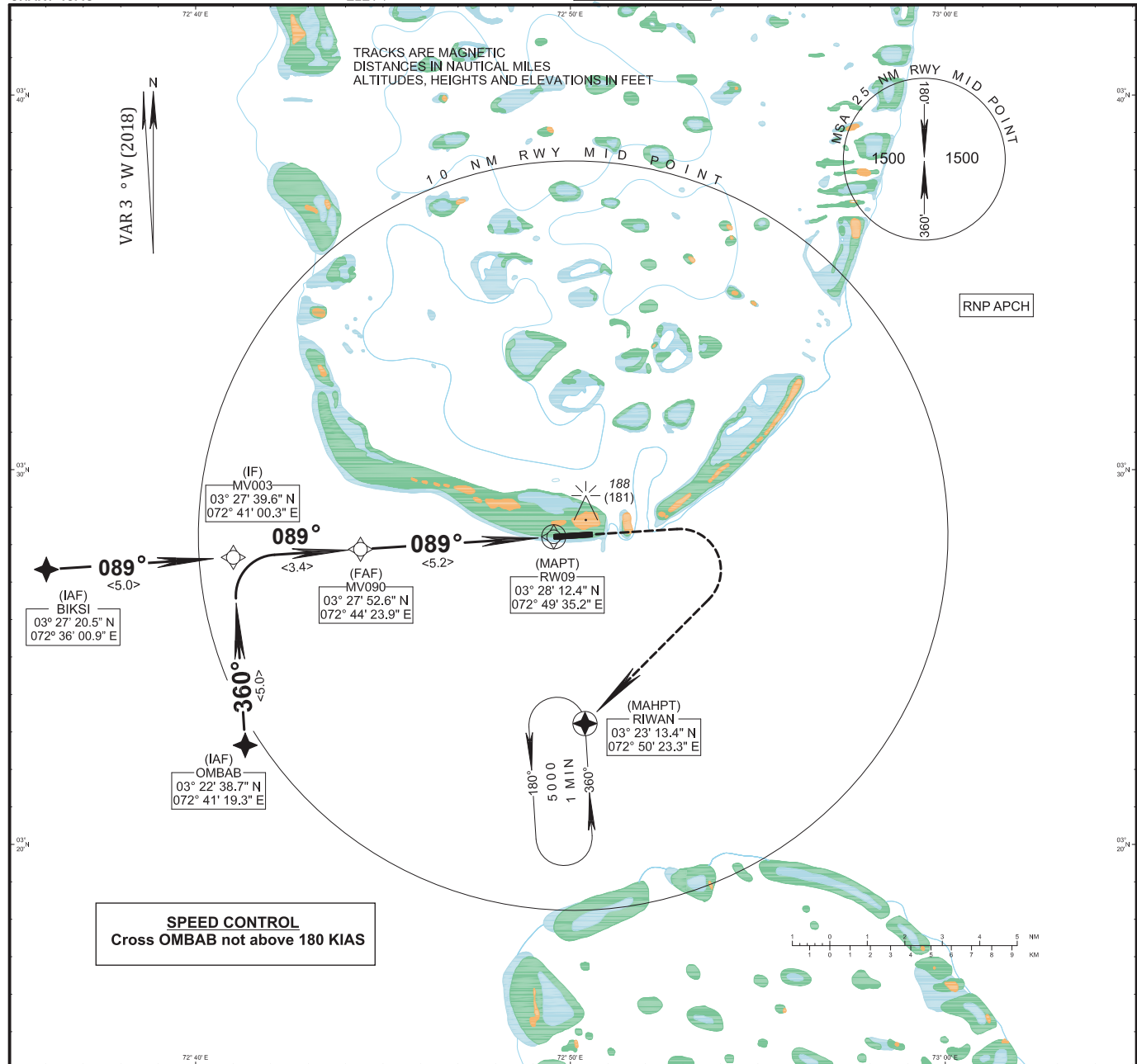
INSTRUMENT APPROACH CHART- ICAO

AD ELEV 7  
HEIGHTS RELATED TO THR 27  
ELEV 7

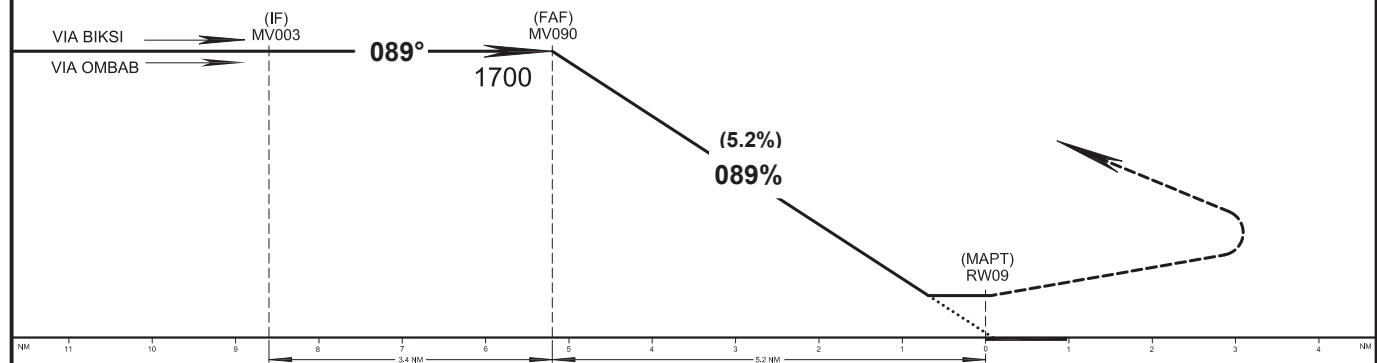
MAAMIGILI TWR 118.9  
MAAMIGILI ATIS 125.6

MAAMIGILI / VILLA INTERNATIONAL AIRPORT

RNP RWY 09

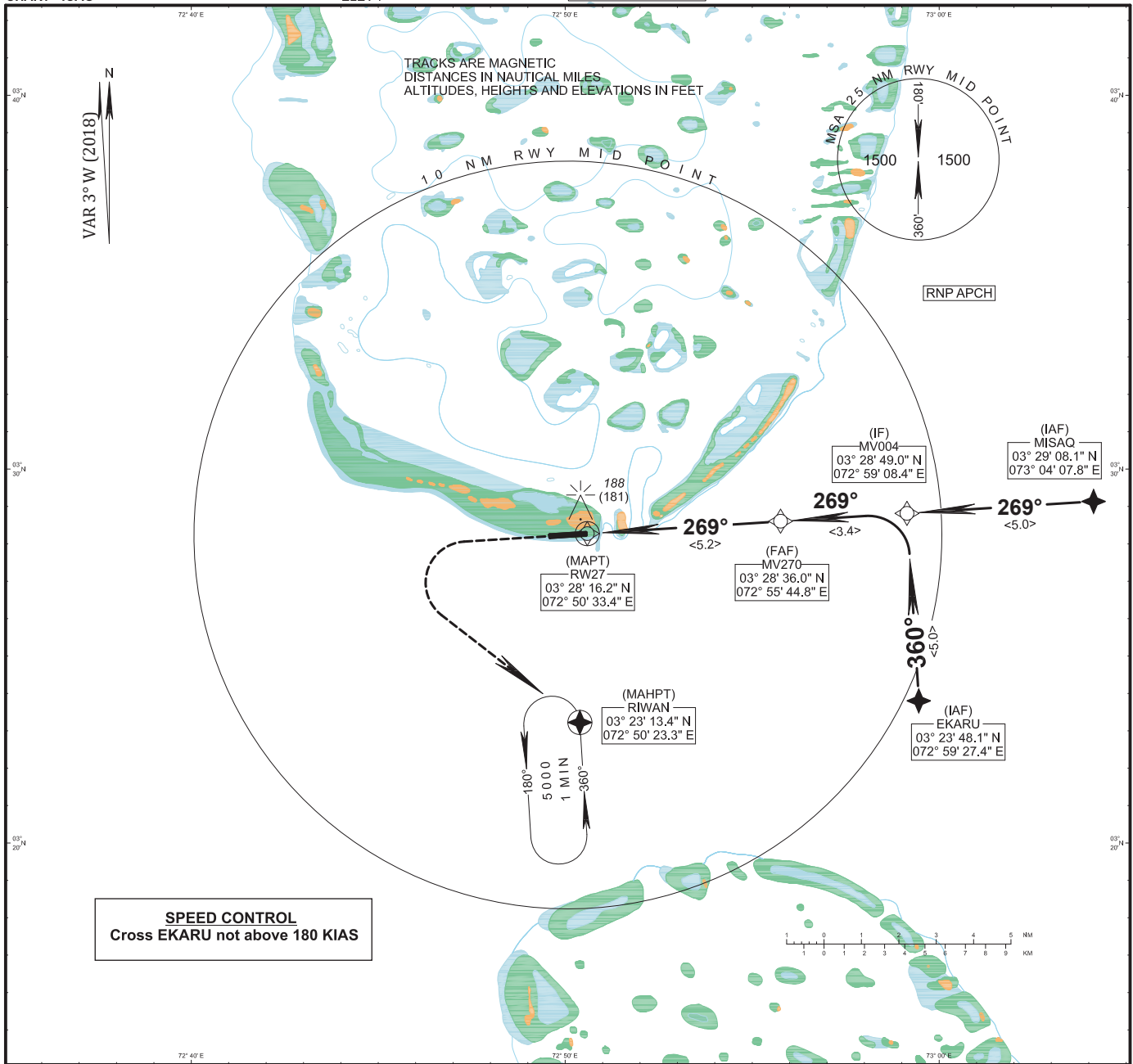


MISSED APPROACH: CLIMB STRAIGHT AHEAD, WHEN DIRECTED BY ATC TURN RIGHT TO 'RIWAN'

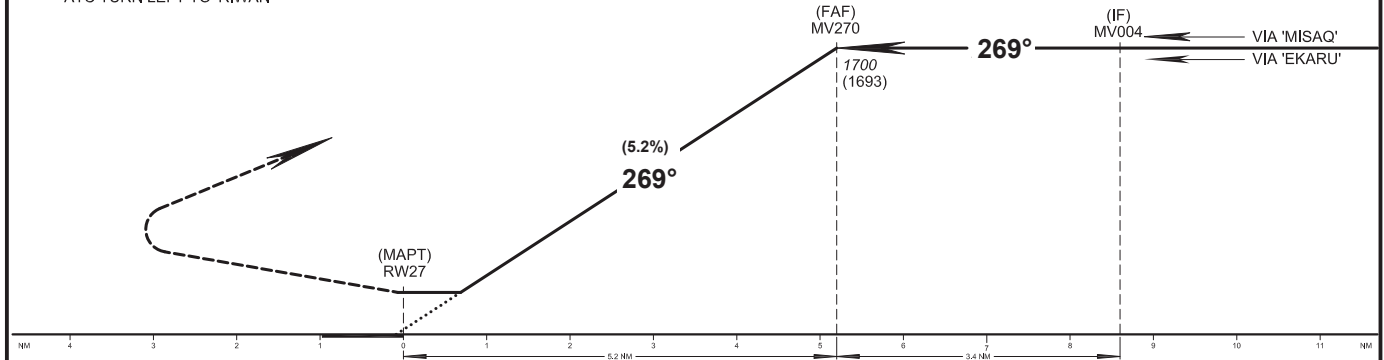


AIRCRAFT CATEGORY	A		B		C	
LNAV MDA (MDH)			440 (433)			
DISTANCE TO THR	5	4	3	2	1	
ALTITUDE (HEIGHT)	1640 (1633)	1320 (1313)	1000 (993)	690 (683)	370 (363)	





MISSED APPROACH: CLIMB STRAIGHT AHEAD, WHEN DIRECTED BY ATC TURN LEFT TO 'RIWAN'



AIRCRAFT CATEGORY	A		B		C	
LNAV MDA (MDH)	440 (433)					
DISTANCE TO THR	5	4	3	2	1	
ALTITUDE (HEIGHT)	1640 (1633)	1320 (1313)	1000 (993)	690 (683)	370 (363)	