

AD 2 AERODROMES**VRMG AD 2.1 AERODROME LOCATION INDICATOR AND NAME**

VRMG – GAN ISLAND / GAN INTERNATIONAL

VRMG AD 2.2 AERODROME GEOGRAPHICAL AND ADMINISTRATIVE DATA

| | | |
|---|--|---|
| 1 | <i>ARP coordinates and site at AD</i> | 004136S 0730920E Runway mid-point |
| 2 | <i>Direction and distance from City</i> | 148° 13KM from Hithadhoo |
| 3 | <i>Elevation / Reference temperature</i> | 2.1 M (7FT) / 31.6°C |
| 4 | <i>MAG VAR/Annual change</i> | 4° W (2017) |
| 5 | <i>AD Operators</i> <i>Address</i> <i>Telephone</i> <i>Fax</i> <i>E-mail</i> | Addu International Airport PVT Ltd. Gan International Airport Gan, Addu City Republic of Maldives Tel: (960) 689 8010 (960) 689 8009 Telefax: NIL info@ganairport.aero |
| 6 | <i>Types of traffic permitted (IFR/VFR)</i> | IFR/VFR |
| 7 | <i>Remarks</i> | Nil. |

VRMG AD 2.3 OPERATIONAL HOURS

| | | |
|----|-----------------------------------|--|
| 1 | <i>AD Operator</i> | H24 |
| 2 | <i>Customs and immigration</i> | H24 |
| 3 | <i>Health and sanitation</i> | H24 |
| 4 | <i>AIS Briefing Office</i> | H24 |
| 5 | <i>ATS Reporting Office (ARO)</i> | H24 |
| 6 | <i>MET Briefing Office</i> | H24 |
| 7 | <i>ATS</i> | H24 |
| 8 | <i>Fuelling</i> | H24 |
| 9 | <i>Handling</i> | H24 |
| 10 | <i>Security</i> | H24 |
| 11 | <i>De-icing</i> | Not Applicable |
| 12 | <i>Remarks</i> | Prior permission required for non-scheduled traffic. |

VRMG AD 2.4 HANDLING SERVICES AND FACILITIES

| | | |
|---|---|--|
| 1 | <i>Cargo handling facilities</i> | All facilities available to handle up to Code E aircraft |
| 2 | <i>Fuel/oil types</i> | Jet A1 |
| 3 | <i>Fuelling facilities/capacity</i> | 2 trucks, capacity 59 MT/2600 KL |
| 4 | <i>De-icing facilities</i> | Not Applicable |
| 5 | <i>Hangar space available for visiting aircraft</i> | Nil |
| 6 | <i>Repair facilities for visiting aircraft</i> | Nil |
| 7 | <i>RMK</i> | Nil |

VRMG AD 2.5 PASSENGER FACILITIES

| | | |
|---|---------------------------|---|
| 1 | <i>Hotels</i> | At AD |
| 2 | <i>Restaurants</i> | At AD and in the city |
| 3 | <i>Transportation</i> | Private taxis and bus service |
| 4 | <i>Medical facilities</i> | First aid at AD. Hospital in the city |
| 5 | <i>Bank/Post</i> | At AD. Open during flight operation hours |
| 6 | <i>Tourist Office</i> | Nil |
| 7 | <i>Remarks</i> | Nil |

VRMG AD 2.6 RESCUE AND FIRE FIGHTING SERVICES

| | | |
|---|--|--|
| 1 | <i>AD category for fire fighting</i> | CAT 8 |
| 2 | <i>Rescue equipment</i> | All equipment required for CAT 8 available |
| 3 | <i>Capability for removal of disabled aircraft</i> | Nil |
| 4 | <i>Remarks</i> | Nil |

VRMG AD 2.7 SEASONAL AVAILABILITY - CLEARING

| | | |
|---|------------------------------------|---|
| 1 | <i>Types of clearing equipment</i> | Nil |
| 2 | <i>Clearance priorities</i> | Nil |
| 3 | <i>Remarks</i> | Aerodrome available throughout the year |

VRMG AD 2.8 APRONS, TAXIWAYS AND CHECK LOCATIONS DATA

| | | |
|---|--|---|
| 1 | <i>Apron surface and strength</i> | Surface: Concrete Strength: PCN120 |
| 2 | <i>Taxiway width, surface and strength</i> | Width: 23M Surface: Concrete Strength: PCN120 |
| 3 | <i>ACL location and elevation</i> | Location: RWY Mid-point Elevation: 2.2M/ 7FT |
| 4 | <i>VOR/INS Checkpoint</i> | VOR: NIL INS: NIL |
| 5 | <i>Remarks</i> | NIL |

VRMG AD 2.9 SURFACE MOVEMENT GUIDANCE AND CONTROL SYSTEM AND MARKINGS

| | | |
|---|--|--|
| 1 | <i>Use of aircraft stand ID signs, TWY guide lines and visual docking/parking guidance system of aircraft stands</i> | TWY Sign boards, LGT at all intersections with TWY and RWY |
| 2 | <i>RWY/TWY markings and LGT</i> | RWY: Designation, THR, TDZ, fixed distance, centreline and pre- THR markings. THR and end lights. TWY: centreline and holding position markings. Edge lights on TWY A and B |
| 3 | <i>Stop bars</i> | Nil |
| 4 | <i>Remarks</i> | Nil |

VRMG AD 2.10 AERODROME OBSTACLES

| <i>In approach/TKOF areas</i> | | | <i>In circling area and at AD</i> | | <i>Remarks</i> |
|-------------------------------|---|--------------------|---|---------------------------|----------------|
| 1 | | | 2 | | |
| <i>RWY/Area affected</i> | <i>Obstacle type elevation markings / LGT</i> | <i>Coordinates</i> | <i>Obstacle type elevation markings / LGT</i> | <i>Coordinates</i> | |
| <i>a</i> | <i>b</i> | <i>c</i> | <i>a</i> | <i>b</i> | |
| | | | Hithadhoo Dhiraagu Antenna 72 M | 003651S 0730549E | |
| | | | Hithadhoo Dhiraagu Site 2 (Near Hithadhoo School) 45M | 003535S 0730449E | |
| | | | Hithadhoo Dhiraagu Site 3 (Near Police Academy) 30 M | 003616S 0730524E | |
| | | | Maradhoo Dhiraagu Antenna 30 M | 004010S 0730721E | |
| | | | Feydhoo Dhiraagu Antenna 30 M | 00 40 55 S 073 08 05 E | |
| | | | Dhiraagu Antenna on Gan Building 80 17 M | 004118S 0730901E | |
| | | | Dhiraagu Antenna at Gan Site 2 42 M | 004118S 0730902E | |
| | | | Dhiraagu Antenna at Hulhumeedhoo 45 M | 003523S 0731318E | |
| | | | Dhiraagu Antenna at Herethere 45 M | 003640S 0731329E | |
| | | | Dhiraagu Antenna at Villingili 25 M | 004024S 0731134E | |
| | | | Wataniya Antenna at Feydhoo 45 M | 004037S 0730749E | |
| | | | Wataniya Antenna at Hithadhoo Site 1 55 M | 003645S 0730524E | |
| | | | Wataniya Antenna at Hithadhoo Site 2 40 M | 003547S 0730524E | |
| | | | Wataniya Antenna at Hulhudhoo 80 M | 003526S 0731335E | |
| | | | Wataniya Antenna at GAN 25 M | 004123S 0730909E | |
| | | | Runway 10 Windssock 7 M | 004127S 0730845E | |

VRMG AD 2.10 AERODROME OBSTACLES

| <i>In approach/TKOF areas</i> | | | <i>In circling area and at AD</i> | | <i>Remarks</i> |
|-------------------------------|---|--------------------|---|---------------------|----------------|
| 1 | | | 2 | | |
| <i>RWY/Area affected</i> | <i>Obstacle type elevation markings / LGT</i> | <i>Coordinates</i> | <i>Obstacle type elevation markings / LGT</i> | <i>Coordinates</i> | |
| <i>a</i> | <i>b</i> | <i>c</i> | <i>a</i> | <i>b</i> | |
| | | | Runway 28 Windsock 7 M | 004144S 0730955E | |
| | | | Apron Floodlight Mast NR 1 20 M | 004125S 0730918E | |
| | | | Apron Floodlight Mast NR 2 20 M | 004125S 0730920E | |
| | | | Apron Floodlight Mast NR 3 20 M | 004126S 0730925E | |
| | | | Apron Floodlight Mast NR 4 20 M | 004126S 0730927E | |
| | | | Apron Floodlight Mast NR 5 20 M | 004127S 0730931E | |
| | | | Apron Floodlight Mast NR 6 20 M | 004127S 0730934E | |
| | | | VOR / DME 8.5 M | 004139S 0730919E | |

VRMG AD 2.11 METEOROLOGICAL INFORMATION PROVIDED

| | | |
|----|--|--|
| 1 | <i>Associated MET Office</i> | Gan MET Office |
| 2 | <i>Hours of service MET Office outside hours</i> | H24 - |
| 3 | <i>Office responsible for TAF preparation Periods of validity</i> | National Meteorological Centre 24 HR |
| 4 | <i>Type of landing forecast Interval of issuance</i> | TREND on request |
| 5 | <i>Briefing/consultation provided</i> | At Gan Met. office |
| 6 | <i>Flight documentation Language(s) used</i> | Charts, abbreviated plain language text English |
| 7 | <i>Charts and other INFO AVBL</i> | S, U ₈₅ , U ₅₀ , U ₂₅ , SWH, SWM, T |
| 8 | <i>Supplementary EQPT AVBL for INFO for briefing or consultation</i> | Telefax: |
| 9 | <i>ATS Units Provided with information</i> | Gan TWR Male' AACC |
| 10 | <i>Additional information</i> | 2 hours prior notice required |

VRMG AD 2.12 RUNWAY PHYSICAL CHARACTERISTICS

| <i>Designation RWY NR</i> | <i>True & MAG BRG</i> | <i>Dimensions of RWY (M)</i> | <i>Strength (PCN) and surface of RWY and SWY</i> | <i>THR coordinates</i> | <i>THR elevation and highest elevation of TDZ of precision APP RWY</i> |
|-----------------------------------|-------------------------------|----------------------------------|--|---------------------------|--|
| 1 | 2 | 3 | 4 | 5 | 6 |
| 10 | 099° GEO 104° MAG | 2960X45 | PCN 120/R/C/W/T Concrete | 004126.20S 0730818.50E | THR 2.1M / 6.8FT |
| 28 | 279° GEO 284° MAG | | | 004140.80S 0730953.10E | THR 2.2M / 7.2FT |

| <i>Slope of RWY-SWY</i> | <i>SWY dimensions (M)</i> | <i>CWY dimensions (M)</i> | <i>Strip dimensions (M)</i> | <i>OFZ</i> | <i>Remarks</i> |
|-----------------------------|-----------------------------------|-----------------------------------|-------------------------------------|------------|----------------|
| 7 | 8 | 9 | 10 | 11 | 12 |
| 0% | Nil | 800 x 75 | 3080 X 300 | Nil | Nil |
| 0% | Nil | 300 x 75 | 3080 X 300 | Nil | Nil |

VRMG AD 2.13 DECLARED DISTANCES

| <i>RWY</i> | <i>TORA (M)</i> | <i>TODA (M)</i> | <i>ASDA (M)</i> | <i>LDA (M)</i> | <i>Remarks</i> |
|------------|-----------------|-----------------|-----------------|----------------|----------------|
| 1 | 2 | 3 | 4 | 5 | 6 |
| 10 | 3200 | 4000 | 3200 | 2960 | Nil |
| 28 | 3260 | 3560 | 3260 | 2960 | Nil |

VRMG AD 2.14 APPROACH AND RUNWAY LIGHTING

| <i>RWY Designator</i> | <i>APP LGT type LEN INTST</i> | <i>THR LGT colour WBAR</i> | <i>VASIS (MEHT) PAPI</i> | <i>TDZ. LGT LEN</i> | <i>RWY Centre Line LGT Length, spacing colour, INTST</i> | <i>RWY edge LGT LEN. spacing colour INTST</i> | <i>RWY End LGT colour WBAR</i> | <i>SWY LGT LEN (M) colour</i> | <i>Remarks</i> |
|---------------------------|---|------------------------------------|-----------------------------------|-----------------------------|--|---|--|---|----------------|
| 1 | 2 | 3 | 4 | 5 | 6 | 7 | 8 | 9 | 10 |
| 10 | SALS 420 M 1 to 5 | Green Yes | PAPI on left side3° 66FT | Nil | Nil | 2651 M 58.9 M Red, white& Yellow 1 to 5 | Red - | Nil | Nil |
| 28 | SALS 420 M 1 to 5 | Green Yes | PAPI on left side3° 66FT | Nil | Nil | 2651 M 58.9 M Red, white& Yellow 1 to 5 | Red - | Nil | Nil |

VRMG AD 2.15 OTHER LIGHTING, SECONDARY POWER SUPPLY

| | | |
|---|---|---|
| 1 | <i>ABN/IBN location, characteristics and hours of operation</i> | ABN on top of Control Tower, ALTN WIG EV 5 SEC/ IBN : Nil, HN |
| 2 | <i>LDI location and LGT Anemometer location and LGT</i> | LDI: Nil Anemometer: On top of control tower Nil |
| 3 | <i>TWY edge and centre line lighting</i> | Edge TWY, A, B Centre Line: Nil |
| 4 | <i>Secondary power supply / switch-over time</i> | All airfield lighting /12 SEC |
| 5 | <i>Remarks</i> | Nil |

VRMG AD 2.16 HELICOPTER LANDING AREA

| | | |
|---|--|---|
| 1 | <i>Coordinates TLOF or THR of FATO</i> | Nil |
| 2 | <i>TLOF and/or FATO elevation M/FT</i> | Nil |
| 3 | <i>TLOF and FATO area dimensions, surface, strength, marking</i> | Nil |
| 4 | <i>True and MAG BRG of FATO</i> | Nil |
| 5 | <i>Declared distance available</i> | Nil |
| 6 | <i>APP and FATO lighting</i> | Nil |
| 7 | <i>Remarks</i> | All helicopters land/take-off on/from RWY |

VRMG AD 2.17 ATS AIRSPACE

| | | |
|---|---------------------------------------|--|
| 1 | <i>Designation and lateral limits</i> | GAN CTR A circle, radius 20NM centred at 004139.37S 0730919.77E (GAN VOR) |
| 2 | <i>Vertical limits</i> | SFC to 8 500FT AMSL |
| 3 | <i>Airspace classification</i> | D |
| 4 | <i>ATS unit Language(s)</i> | Gan Tower English |
| 5 | <i>Transition altitude</i> | 11 000FT AMSL |
| 6 | <i>Remarks</i> | Nil |

VRMG AD 2.18 ATS COMMUNICATION FACILITIES

| <i>Service Designation</i> | <i>Call sign</i> | <i>Frequency</i> | <i>Hours of operation</i> | <i>Remarks</i> |
|----------------------------|------------------|------------------------------------|---------------------------|--|
| 1 | 2 | 3 | 4 | 5 |
| TWR | GAN Control | 119.1MHz 121.5 MHz 121.6 MHz | HO HO HO | Primary frequency Emergency frequency Frequency SMC frequency |

VRMG AD 2.19 RADIO NAVIGATION AND LANDING AIDS

| Type of aid, CAT of ILS/MLS (For VOR/ILS/MLS, give VAR) | ID | Frequency | Hours of operation | Site of transmitting antenna coordinates | Elevation of DME transmitting antenna | Remarks |
|---|-----|--------------------|--------------------|--|---------------------------------------|---------|
| 1 | 2 | 3 | 4 | 5 | 6 | 7 |
| VOR/ DME (5° W, 1995) | GAN | 113.4MHz CH 81X | H24 | 004139.37S 0730919.77E | 10M | Nil |

VRMG AD 2.20 LOCAL TRAFFIC REGULATIONS

Nil

VRMG AD 2.21 NOISE ABATEMENT PROCEDURES

Nil

VRMG AD 2.22 FLIGHT PROCEDURES

Nil

VRMGAD 2.23 ADDITIONAL INFORMATION

Concentration of birds at Gan International Airport, on and around runway 10/28 are expected. All pilots are advised to exercise caution.

VRMG AD 2.24 CHARTS RELATED TO GAN AIRPORT

| | |
|---|---------------|
| Aerodrome chart | VRMG AD 2-9 |
| Aerodrome chart | VRMG AD 2-9.2 |
| Instrument Approach Chart- ICAO, VOR Y RWY 10 | VRMG AD 2-11 |
| Instrument Approach Chart- ICAO, VOR Z RWY 10 | VRMG AD 2-13 |
| Instrument Approach Chart- ICAO, VOR Y RWY 28 | VRMG AD 2-15 |
| Instrument Approach Chart- ICAO, VOR Z RWY 28 | VRMG AD 2-17 |
| Instrument Approach Chart- ICAO, RNP RWY 10 | VRMG AD 2-19 |
| Instrument Approach Chart- ICAO, RNP RWY 28 | VRMG AD 2-21 |

INTENTIONALLY LEFT BLANK

AERODROME CHART

004136S, 0730920E, ELEV. 2.053 m

TWR 119.1

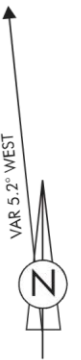
GAN / INTERNATIONAL

RWY STRENGTH, BEARINGS AND DECLARED DISTANCES

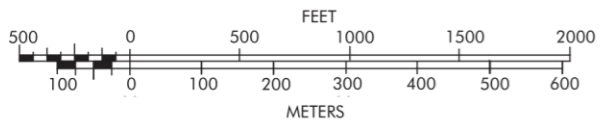
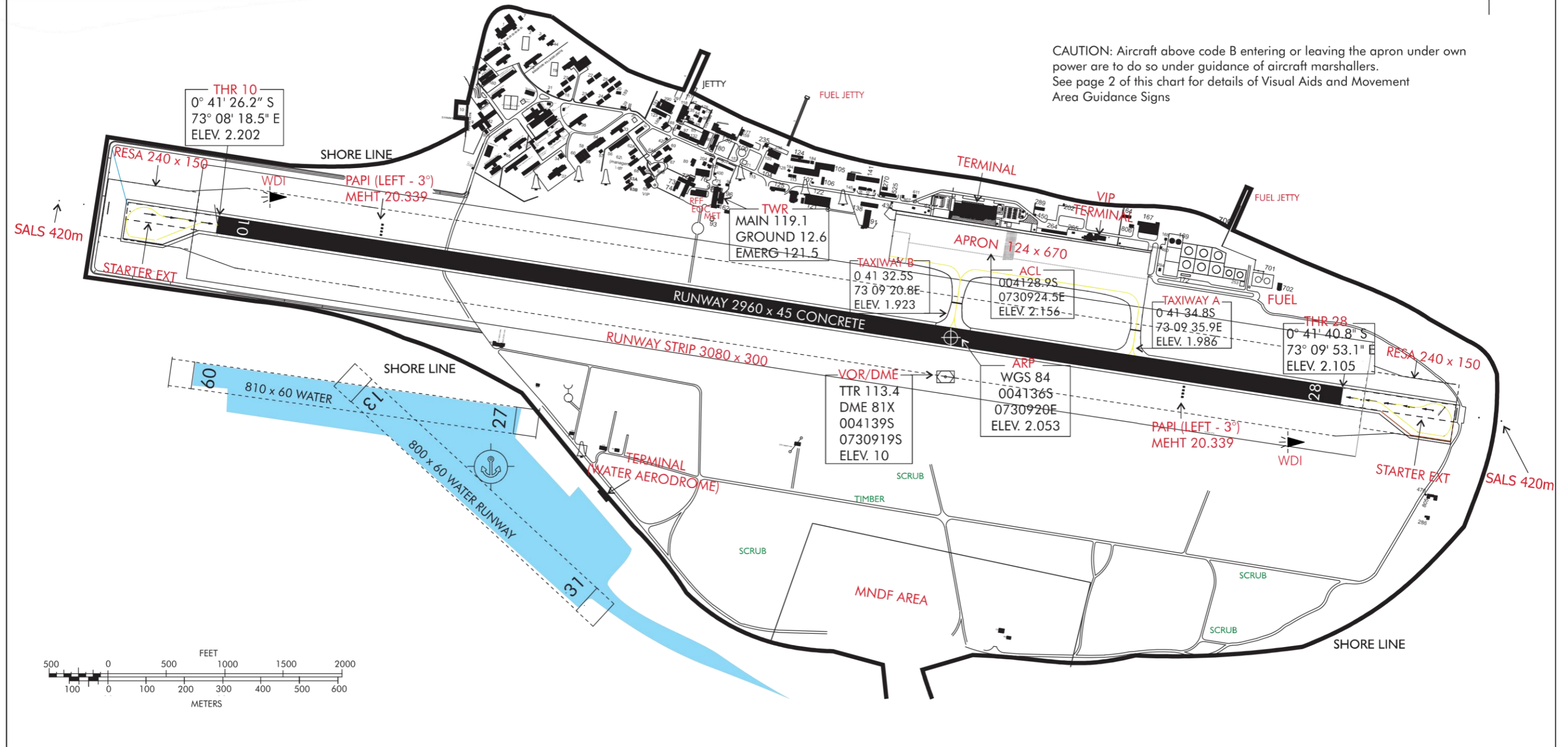
| BEARING STRENGTH | TRUE BEARING | DESIGNATION | TORA | TODA | ASDA | LDA |
|---------------------------------------|--------------|-------------|------|------|------|------|
| RUNWAY, TAXIWAYS, TURN PADS and APRON | 099° | 10 | 3200 | 4000 | 3200 | 2960 |
| PCN 120 R/C/W/T | 279° | 28 | 3260 | 3560 | 3260 | 2960 |

NOTES

1. All dimensions are in meters.
2. Declared distances TORA, TODA and ASDA include additional pavement before threshold at both runway 10 and 28
3. Runway 10 has a full width Starter Extension of 240m
4. Runway 28 has a full width Starter Extension of 300m
5. Pilots can roll over through the runway end lights to make a 180° turn at the Turn Pads of both RWY 10 and 28.



CAUTION: Aircraft above code B entering or leaving the apron under own power are to do so under guidance of aircraft marshallsers. See page 2 of this chart for details of Visual Aids and Movement Area Guidance Signs

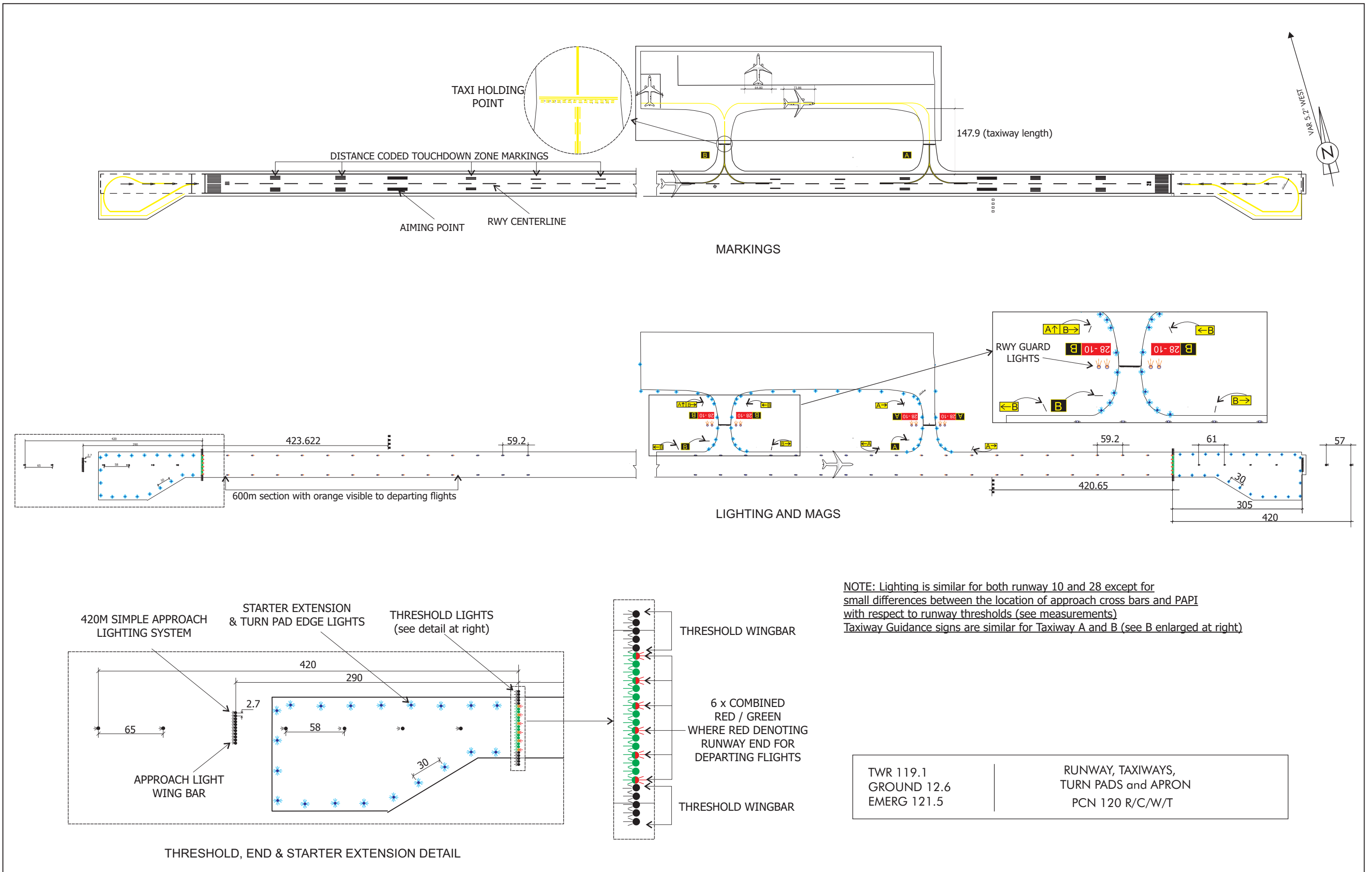


AERODROME CHART

004136S, 0730920E, ELEV. 2.053 m

TWR 119.1

GAN / INTERNATIONAL

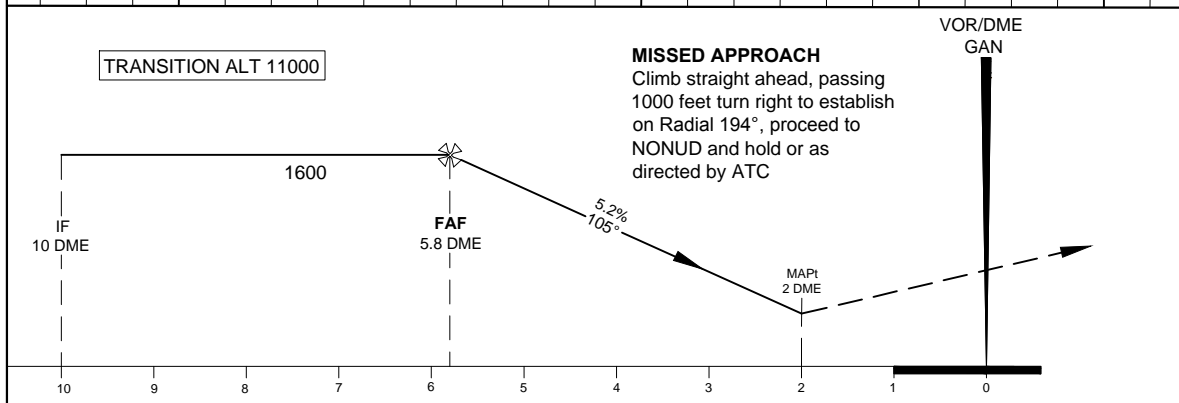
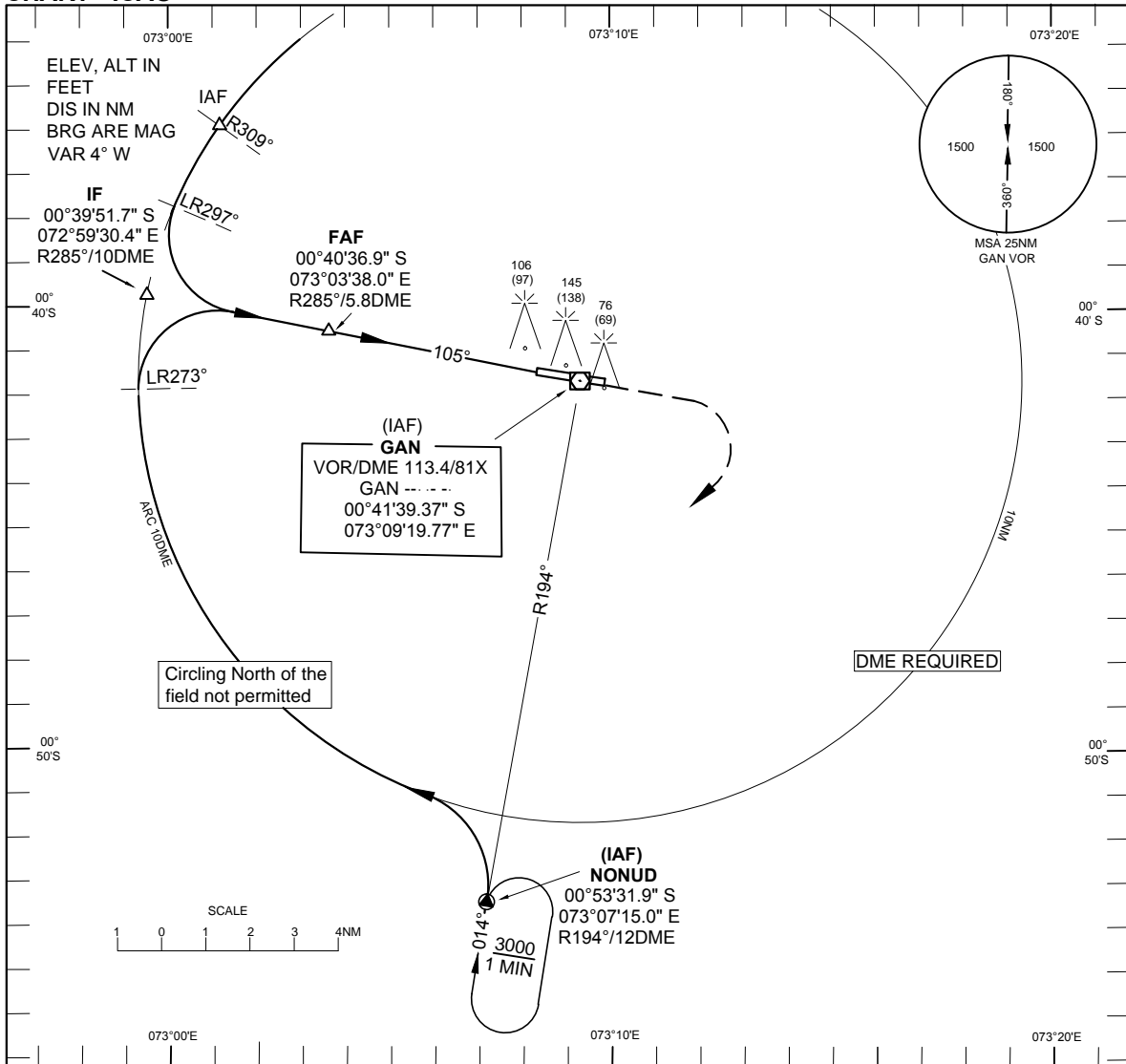


**INSTRUMENT
APPROACH
CHART - ICAO**

AERODROME ELEV 7 FT
HEIGHT RELATED TO
THR RWY 28 - ELEV 7 FT

GAN TWR 119.1

GAN / Intl (VRMG)
VOR Y RWY10



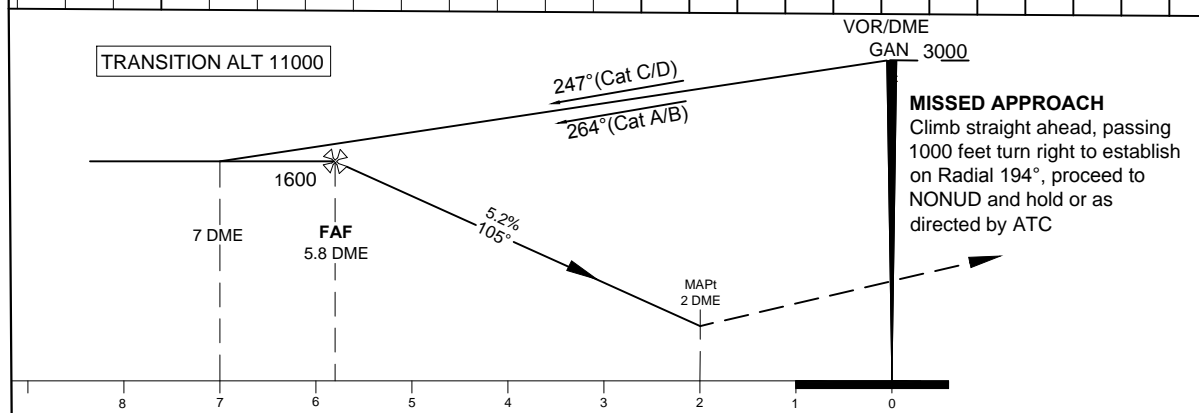
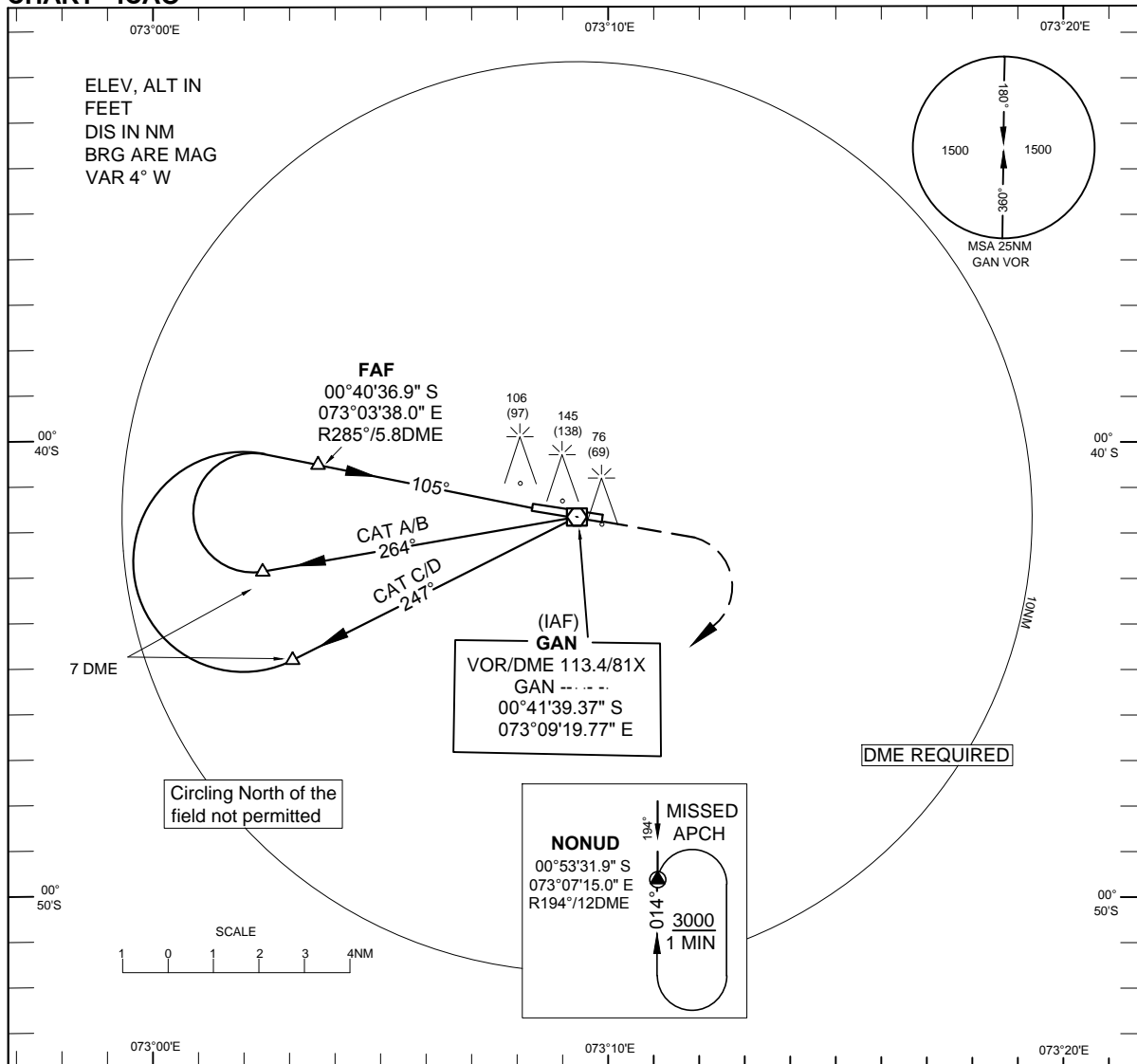
| Aircraft Category | A | B | C | D |
|------------------------|-----|-----------|-----------|-----------|
| Straight-in | | | 370 (360) | |
| Circling | | 440 (433) | | 540 (533) |
| Distance (DME GAN) | 2 | 3 | 4 | 5 |
| Altitude (Ft) | 370 | 690 | 1010 | 1330 |
| Speed (KT) | 70 | 120 | 150 | 185 |
| Rate of Descend (ft/m) | 370 | 635 | 795 | 980 |

**INSTRUMENT
APPROACH
CHART - ICAO**

AERODROME ELEV 7 FT
HEIGHT RELATED TO
THR RWY 28 - ELEV 7 FT

GAN TWR 119.1

GAN / Intl (VRMG)
VOR Z RWY10



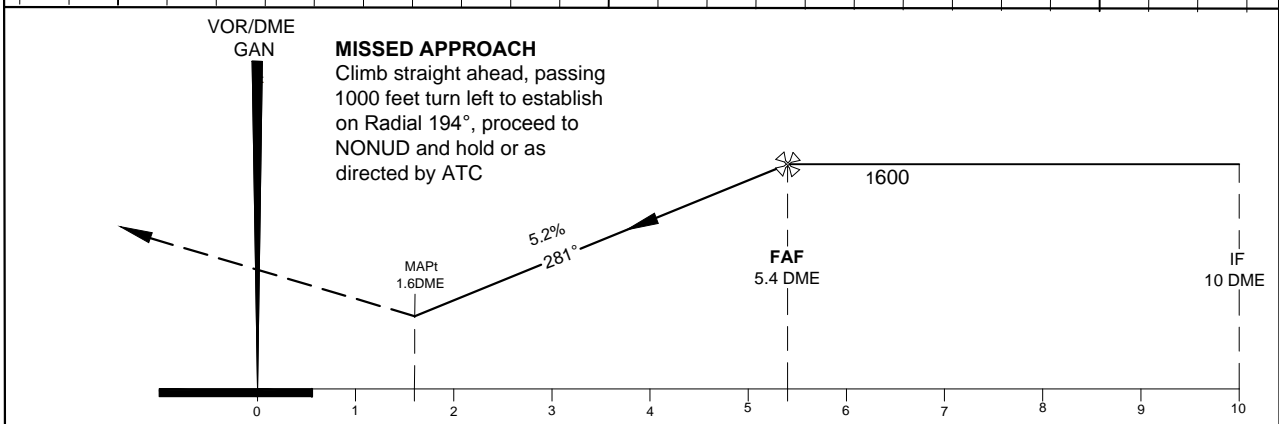
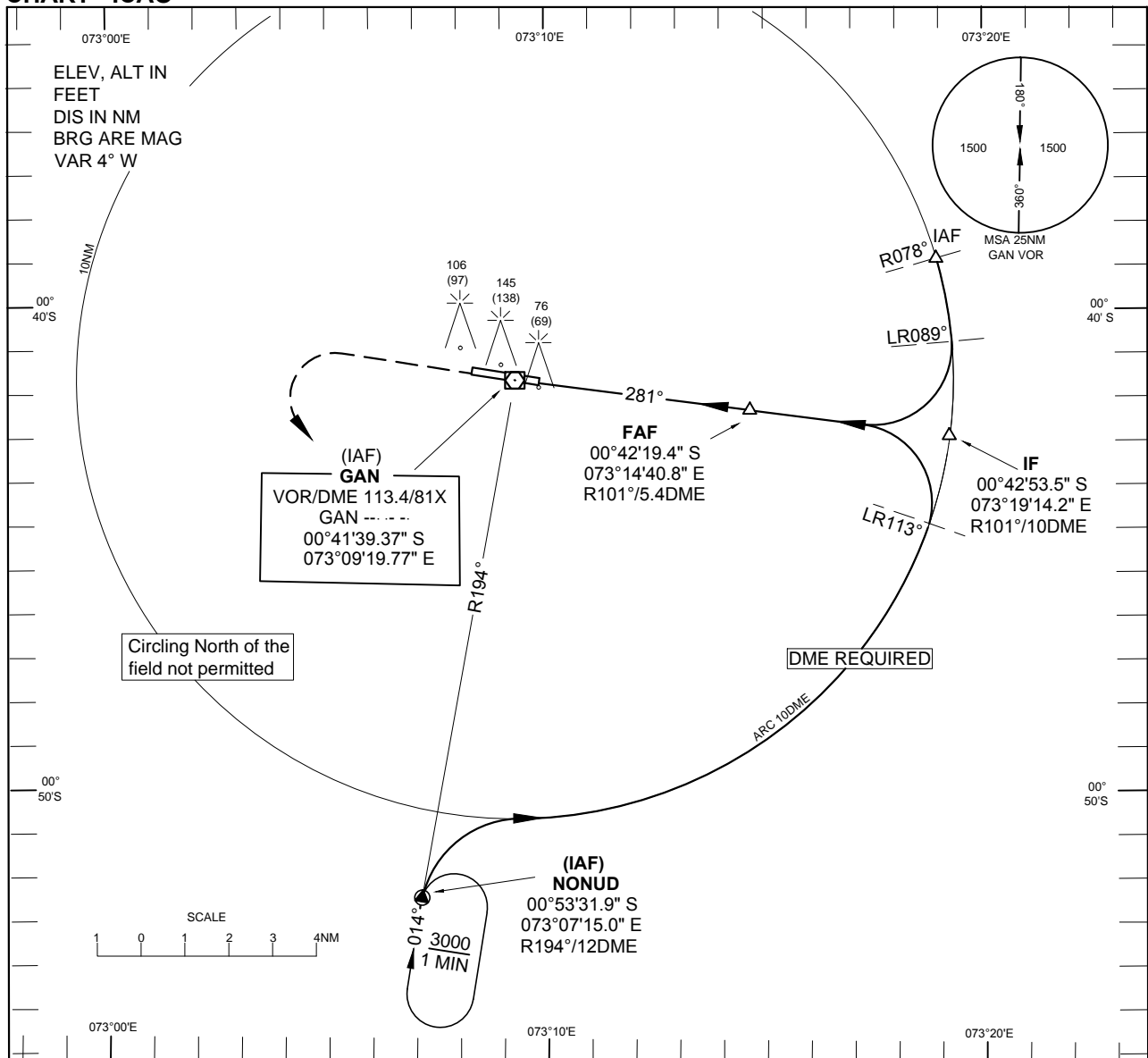
| Aircraft Category | A | B | C | D |
|------------------------|-----|-----------|-----------|-----------|
| Straight-in | | | 370 (360) | |
| Circling | | 440 (433) | | 540 (533) |
| Distance (DME GAN) | 2 | 3 | 4 | 5 |
| Altitude (Ft) | 370 | 690 | 1010 | 1330 |
| Speed (KT) | 70 | 120 | 150 | 185 |
| Rate of Descend (ft/m) | 370 | 635 | 795 | 980 |

**INSTRUMENT
APPROACH
CHART - ICAO**

AERODROME ELEV 7 FT
HEIGHT RELATED TO
THR RWY 28 - ELEV 7 FT

GAN TWR 119.1

GAN / Intl (VRMG)
VOR Y RWY28



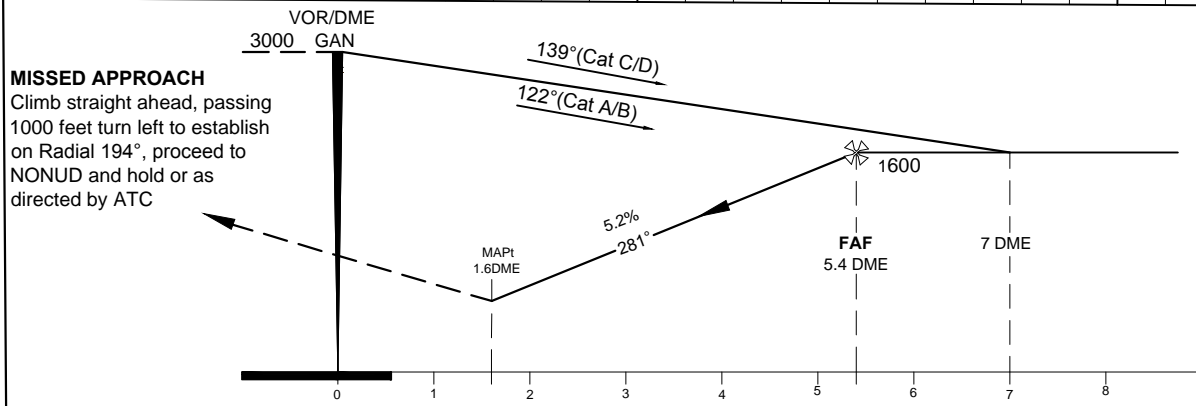
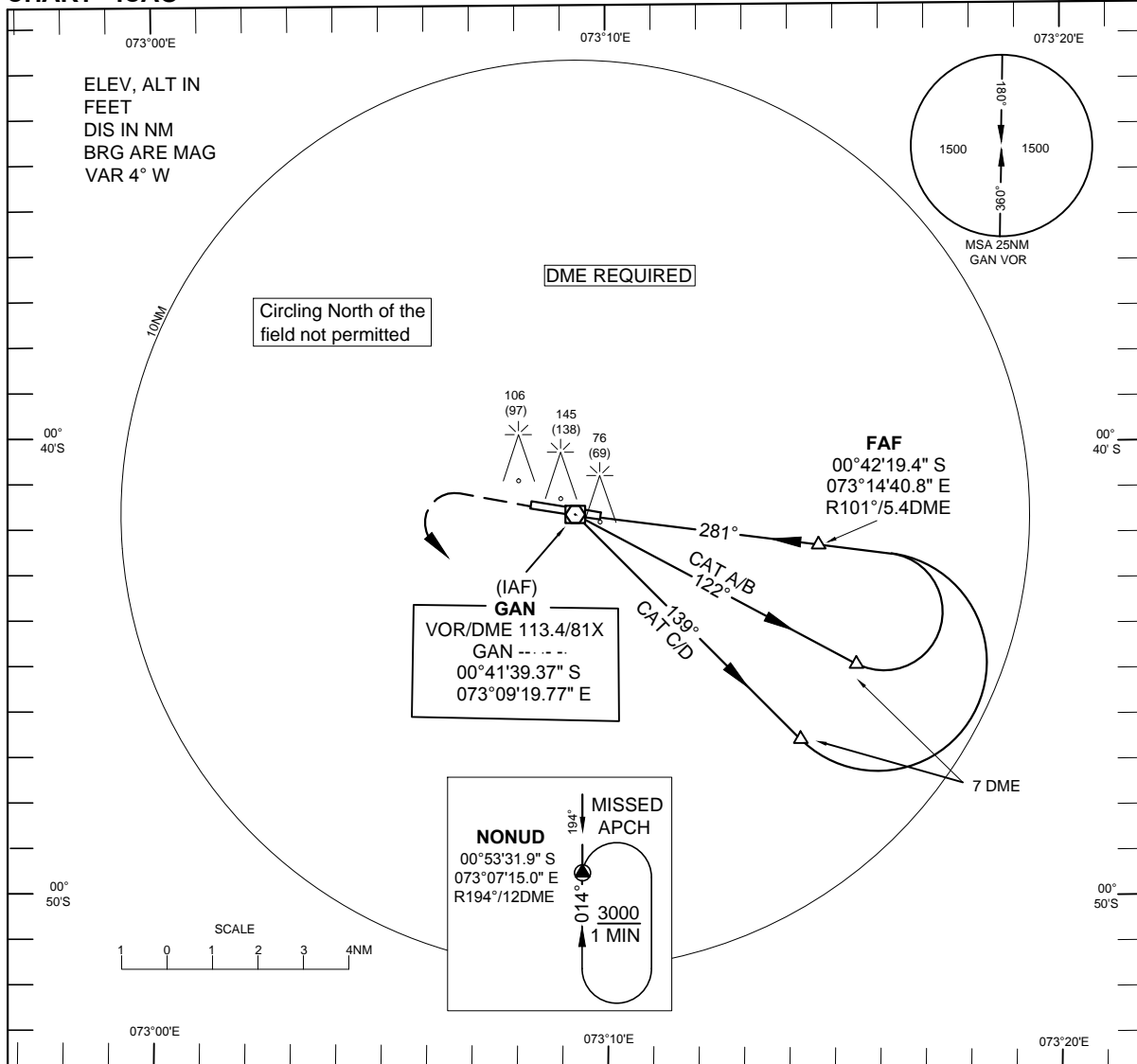
| Aircraft Category | A | B | C | D |
|------------------------|------|-----------|-----------|-----------|
| Straight-in | | | 330 (323) | |
| Circling | | 440 (433) | | 540 (533) |
| Distance (DME GAN) | 5 | 4 | 3 | 2 |
| Altitude (Ft) | 1470 | 1150 | 830 | 510 |
| Speed (KT) | 70 | 120 | 150 | 185 |
| Rate of Descend (ft/m) | 370 | 635 | 795 | 980 |

**INSTRUMENT
APPROACH
CHART - ICAO**

AERODROME ELEV 7 FT
HEIGHT RELATED TO
THR RWY 28 - ELEV 7 FT

GAN TWR 119.1

GAN / Intl (VRMG)
VOR Z RWY28



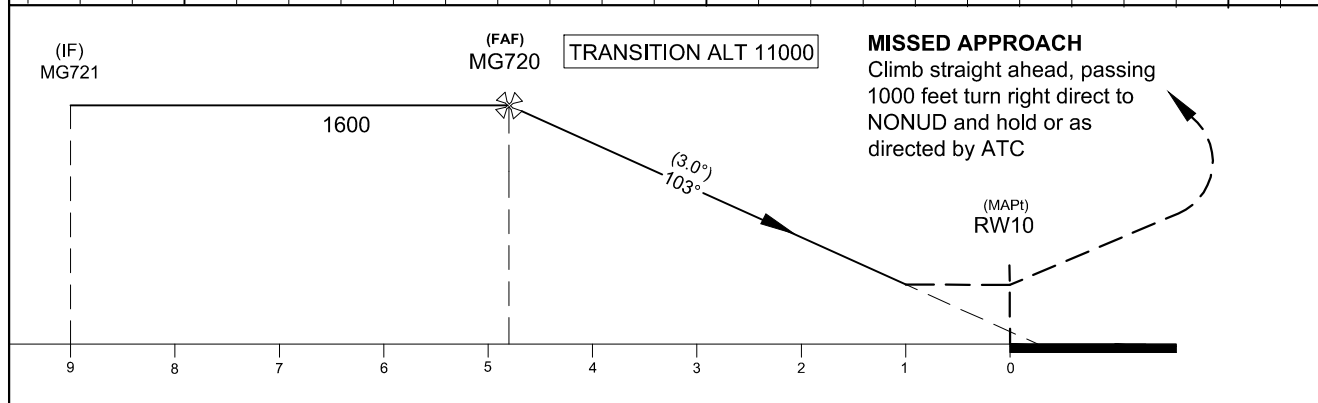
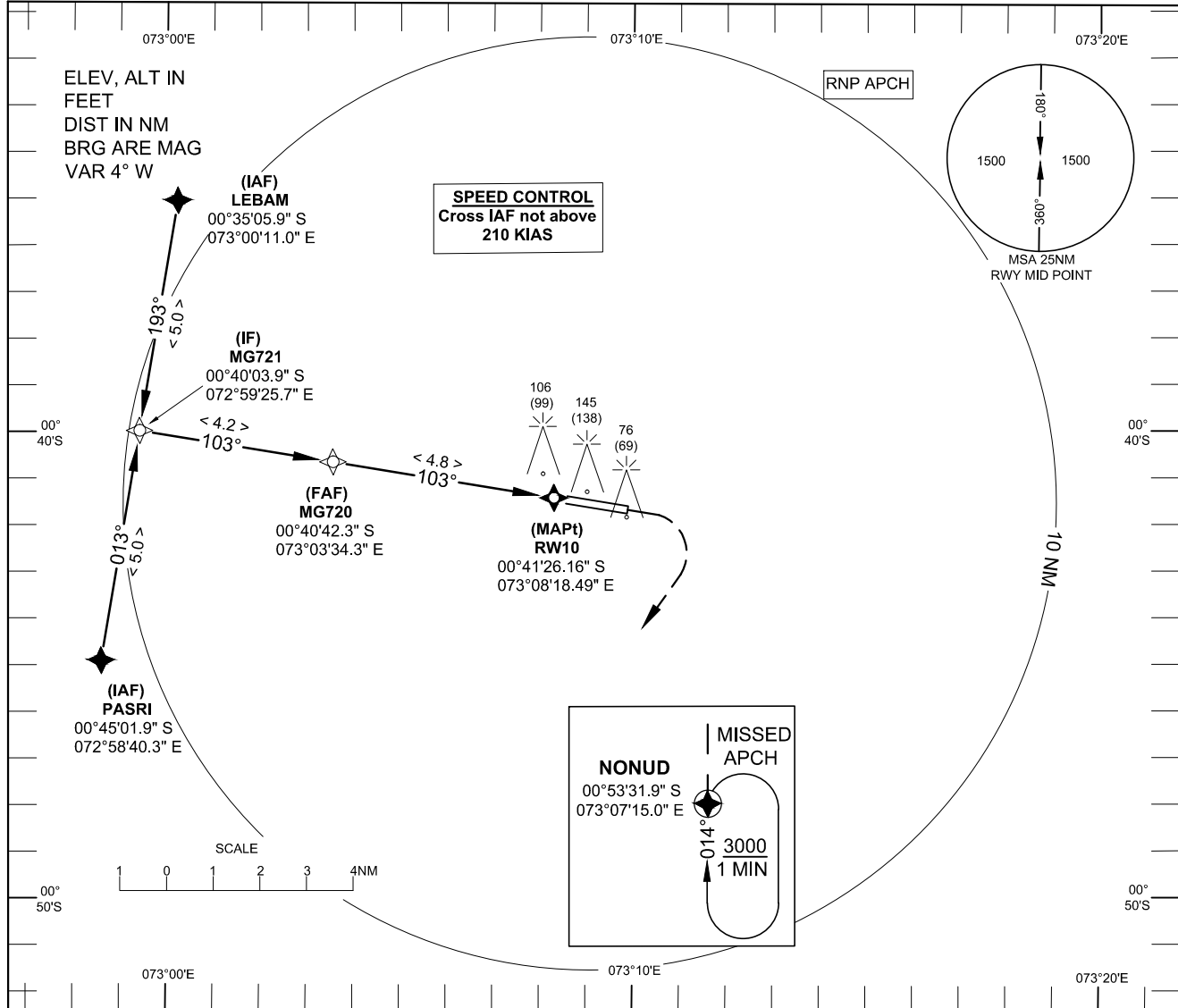
| Aircraft Category | A | B | C | D |
|------------------------|-----------|------|-----------|-----------|
| Straight-in | | | 330 (323) | |
| Circling | 440 (433) | | | 540 (533) |
| Distance (DME GAN) | 5 | 4 | 3 | 2 |
| Altitude (Ft) | 1470 | 1150 | 830 | 510 |
| Speed (KT) | 70 | 120 | 150 | 185 |
| Rate of Descend (ft/m) | 370 | 635 | 795 | 980 |

**INSTRUMENT
APPROACH
CHART - ICAO**

AERODROME ELEV 7 FT
HEIGHT RELATED TO
THR RWY 10 - ELEV 7 FT
MIN TEMP -15°C

GAN TWR 119.1

**GAN / Intl (VRMG)
RNP RWY10**



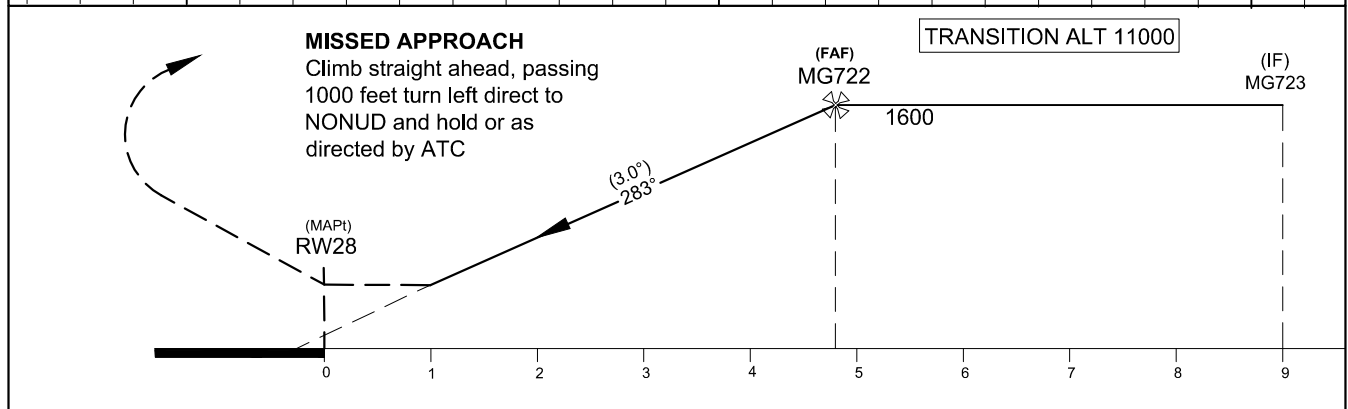
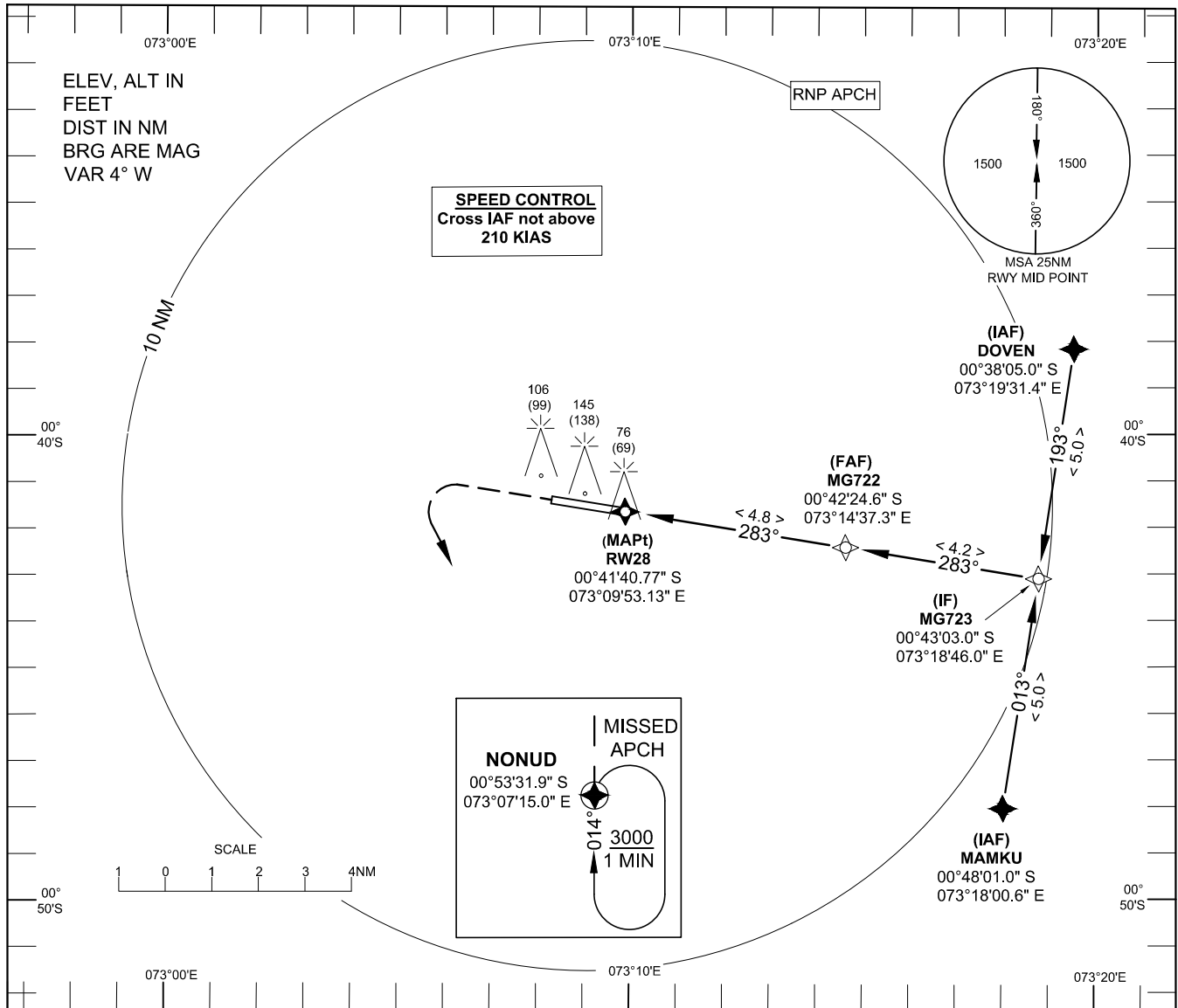
| AIRCRAFT CATEGORY | A | B | C | D |
|-----------------------|-------------|-------------|-----------|-----------|
| LNAV/VNAV DA (DH) | | | 260 (253) | |
| LNAV MDA (MDH) | | | 400 (393) | |
| DISTANCE TO THRESHOLD | 4 | 3 | 2 | 1 |
| ALTITUDE (HEIGHT) | 1330 (1323) | 1010 (1003) | 690 (683) | 380 (373) |

**INSTRUMENT
APPROACH
CHART - ICAO**

AERODROME ELEV 7 FT
HEIGHT RELATED TO
THR RWY 28 - ELEV 7 FT
MIN TEMP -15°C

GAN TWR 119.1

**GAN / Intl (VRMG)
RNP RWY28**



| AIRCRAFT CATEGORY | A | B | C | D |
|-----------------------|-----------|-----------|-------------|-------------|
| LNAV/VNAV DA (DH) | | 260 (253) | | |
| LNAV MDA (MDH) | | 400 (393) | | |
| DISTANCE TO THRESHOLD | 1 | 2 | 3 | 4 |
| ALTITUDE (HEIGHT) | 380 (373) | 690 (683) | 1010 (1003) | 1330 (1323) |